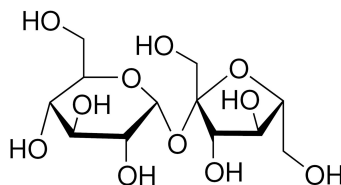


Product Specification

Product Name : Sucrose $\geq 99.5\%$ (GC)
Product Number: S9378
CAS Number: 57-50-1
MDL Number : MFCD00006626
Molecular Formula: $C_{12}H_{22}O_{11}$
Formula Weight: 342.30 g/mol



Test	Specification
Appearance (Color)	White
Appearance (Form)	Crystals
Solubility (Color)	Colorless
Solubility (Turbidity) 0.5 g/ml H ₂ O	Clear
Infrared Spectrum	Conforms to Structure
A260 UV Absorption 50 g plus 50 mL, H ₂ O	≤ 0.2
A280 UV Absorption 50 g plus 50 mL, H ₂ O	≤ 0.2
Heavy Metals (as Lead)	≤ 5 ppm
RNase Detection	None Detected
Purity (GC)	$\geq 99.5\%$
Recommended Retest Period 5 years	-----

Sigma-Aldrich warrants that at the time of the quality release or subsequent retest date this product conformed to the information contained in this publication. The current Specification sheet may be available at Sigma-Aldrich.com. For further inquiries, please contact Technical Service. Purchaser must determine the suitability of the product for its particular use. See reverse side of invoice or packing slip for additional terms and conditions of sale.

Version Number: PRP.02.ZQ5.1130082

Page 1 of 1

The branding on the header and/or footer of this document may temporarily not visually match the product purchased as we transition our branding. However, all of the information in the document regarding the product remains unchanged and matches the product ordered. For further information please contact mlsbranding@sial.com

