

3050 Spruce Street, Saint Louis, MO 63103, USA

Website: www.sigmaaldrich.com

Email USA: techserv@sial.com

Outside USA: eurtechserv@sial.com

Product Specification

Product Name:

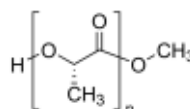
Poly(L-lactide) – average M_n 5,000, $PDI \leq 1.2$

Product Number:

764590

Formula:

$H(C_3H_4O_2)_nOCH_3$



Storage Temperature:

2 - 8 °C

TEST	Specification
------	---------------

Appearance (Color)

White to Faint Yellow and Faint Beige
and Faint Brown

Appearance (Form)

Powder or Solid or Chunk(s)

Proton NMR spectrum

Conforms to Structure

Molecular Number

4000 - 6000

by HNMR

Carbon

Specification: Report Results

Water (by Karl Fischer)

$\leq 3.0 \%$

Molecular Number by GPC

THF, PS

Specification: Report Results

Poly Dispersity MW/MN

≤ 1.2

Note

M_n by HNMR is typically around 58% that of the M_n by GPC

Specification: PRD.3.ZQ5.10000030867

Sigma-Aldrich warrants, that at the time of the quality release or subsequent retest date this product conformed to the information contained in this publication. The current Specification sheet may be available at Sigma-Aldrich.com. For further inquiries, please contact Technical Service. Purchaser must determine the suitability of the product for its particular use. See reverse side of invoice or packing slip for additional terms and conditions of sale.