

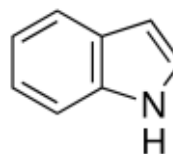
3050 Spruce Street, Saint Louis, MO 63103, USA

Website: www.sigmaaldrich.comEmail USA: techserv@sial.comOutside USA: eurtechserv@sial.com

Product Specification

Product Name:
Indole - ≥99%

Product Number: **I3408**
CAS Number: 120-72-9
MDL: MFCD00005607
Formula: C₈H₇N
Formula Weight: 117.15 g/mol



TEST

Specification

Appearance (Color)
Appearance (Form)
Infrared spectrum
Purity (GC)

White to Beige
Powder or Crystals or Flakes
Conforms to Structure
≥ 99.0 %

Specification: PRD.2.ZQ5.10000004064

Sigma-Aldrich warrants, that at the time of the quality release or subsequent retest date this product conformed to the information contained in this publication. The current Specification sheet may be available at Sigma-Aldrich.com. For further inquiries, please contact Technical Service. Purchaser must determine the suitability of the product for its particular use. See reverse side of invoice or packing slip for additional terms and conditions of sale.