

3050 Spruce Street, Saint Louis, MO 63103, USA

Website: www.sigmaaldrich.comEmail USA: techserv@sial.comOutside USA: eurtechserv@sial.com

Product Specification

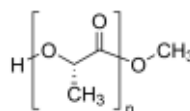
Product Name:

Poly(L-lactide) – average M_n 10,000, PDI ≤ 1.1

Product Number:

765112

Formula:

 $\text{CH}_3\text{O}(\text{C}_6\text{H}_8\text{O}_4)_n\text{H}$ 

Storage Temperature:

2 - 8 °C

TEST

Specification

Appearance (Color)

White to Faint Yellow and Faint Beige

Appearance (Form)

and Faint Brown

Proton NMR spectrum

Powder or Crystals

Molecular Number

Conforms to Structure

by HNMR

7500 - 12500

Molecular Number by GPC

THF/5% TEA, PS

Specification: Report Results

Poly Dispersity MW/MN

 ≤ 1.1

Note

Mn by HNMR is typically around 58% that of the Mn by GPC

Specification: PRD.2.ZQ5.10000029603

Sigma-Aldrich warrants, that at the time of the quality release or subsequent retest date this product conformed to the information contained in this publication. The current Specification sheet may be available at Sigma-Aldrich.com. For further inquiries, please contact Technical Service. Purchaser must determine the suitability of the product for its particular use. See reverse side of invoice or packing slip for additional terms and conditions of sale.