

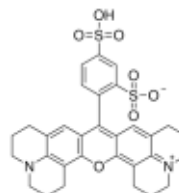
3050 Spruce Street, Saint Louis, MO 63103, USA

Website: [www.sigmaaldrich.com](http://www.sigmaaldrich.com)Email USA: [techserv@sial.com](mailto:techserv@sial.com)Outside USA: [eurtechserv@sial.com](mailto:eurtechserv@sial.com)

## Product Specification

Product Name:  
Sulforhodamine 101 - Dye content ~95 %

Product Number: **S7635**  
CAS Number: 60311-02-6  
MDL: MFCD00012407  
Formula: C<sub>31</sub>H<sub>30</sub>N<sub>2</sub>O<sub>7</sub>S<sub>2</sub>  
Formula Weight: 606.71 g/mol



TEST	Specification
------	---------------

Appearance (Color)	Dark Green to Brown to Black
Appearance (Form)	Powder
Infrared spectrum	Conforms to Structure
Carbon (anhydrous)	57.5 - 65.0 %
Nitrogen (anhydrous)	4.2 - 5.0 %
Wavelength	573 - 579 nm
Extinction Coefficient	≥ 105000
In Ethanol	
Water (by Karl Fischer)	
Solubility (Color)	Conforms
Dark Pink (C = 1mg/ml; Methanol)	

Specification: PRD.1.ZQ5.10000107408

Sigma-Aldrich warrants, that at the time of the quality release or subsequent retest date this product conformed to the information contained in this publication. The current Specification sheet may be available at [Sigma-Aldrich.com](http://Sigma-Aldrich.com). For further inquiries, please contact Technical Service. Purchaser must determine the suitability of the product for its particular use. See reverse side of invoice or packing slip for additional terms and conditions of sale.

