

## Product Information

**MLCK (1425-1776), Active, GST-tagged, human  
Precisio™ Kinase  
recombinant, expressed in *Sf9* cells**

Catalog Number **M9197**  
Lot Number 020M0858  
Storage Temperature  $-70^{\circ}\text{C}$

Synonyms: MYLK, KRP, MLCK108, MLCK210,  
MSTP083, FLJ12216, DKFZp686I10125

### Product Description

MLCK or myosin light chain kinase is a muscle member of the immunoglobulin gene superfamily and is a calcium/calmodulin dependent protein kinase. MLCK is a regulatory protein for smooth muscle contraction, which acts by phosphorylating the 20 kDa myosin light chain (MLC20) to activate the myosin ATPase activity. The kinase activity for the phosphorylation is localized at the central part of MLCK, which also has actin-binding activity at its N-terminal and myosin-binding activity at its C-terminal.<sup>1</sup> Phosphorylation of the regulatory light chain of myosin plays an important role in controlling the morphological changes seen during cell division.<sup>2</sup>

This recombinant product was expressed by baculovirus in *Sf9* insect cells using an N-terminal GST-tag. The gene accession number is NM 053025. It is supplied in 50 mM Tris-HCl, pH 7.5, with 150 mM NaCl, 0.25 mM DTT, 0.1 mM EGTA, 0.1 mM EDTA, 0.1 mM PMSF, and 25% glycerol.

Molecular mass: ~70 kDa

Purity:  $\geq 70\%$  (SDS-PAGE, see Figure 1)

Specific Activity: 170–230 nmole/min/mg (see Figure 2)

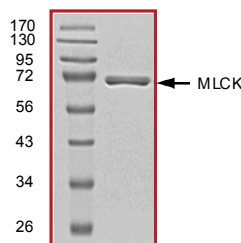
### Precautions and Disclaimer

This product is for R&D use only, not for drug, household, or other uses. Please consult the Material Safety Data Sheet for information regarding hazards and safe handling practices.

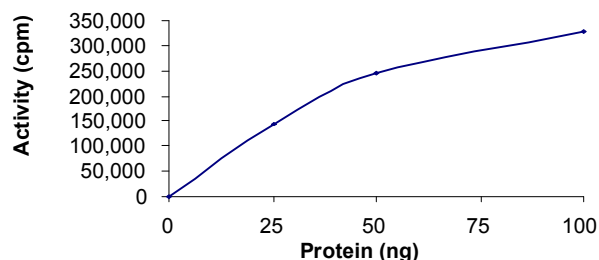
### Storage/Stability

The product ships on dry ice and storage at  $-70^{\circ}\text{C}$  is recommended. After opening, aliquot into smaller quantities and store at  $-70^{\circ}\text{C}$ . Avoid repeated handling and multiple freeze/thaw cycles.

**Figure 1.**  
SDS-PAGE Gel of Lot Number 020M0858:  
>95% (densitometry)



**Figure 2.**  
Specific Activity of Lot Number 020M0858:  
200 nmole/min/mg



### Procedure

#### Preparation Instructions

Kinase Assay Buffer – 25 mM MOPS, pH 7.2, 12.5 mM glycerol 2-phosphate, 25 mM  $\text{MgCl}_2$ , 5 mM EGTA, and 2 mM EDTA. Just prior to use, add DTT to a final concentration of 0.25 mM.

Kinase Dilution Buffer – Dilute the Kinase Assay Buffer 5-fold with a 50 ng/ $\mu\text{L}$  BSA and 5% glycerol solution.

Kinase Solution – Dilute the Active MLCK (0.1 µg/µl) with Kinase Dilution Buffer to the desired concentration. **Note:** The lot-specific specific activity plot may be used as a guideline (see Figure 2). It is recommended that the researcher perform a serial dilution of Active MLCK kinase for optimal results

10 mM ATP Stock Solution – Dissolve 55 mg of ATP in 10 ml of Kinase Assay Buffer. Store in 200 µl aliquots at –20 °C.

$\gamma$ -<sup>32</sup>P-ATP Assay Cocktail (250 µM) – Combine 5.75 ml of Kinase Assay Buffer, 150 µl of 10 mM ATP Stock Solution, 100 µl of  $\gamma$ -<sup>32</sup>P-ATP (1 mCi/100 µl). Store in 1 ml aliquots at –20 °C.

Substrate Solution – Dissolve the LC20 protein substrate in water at a final concentration of 1 mg/ml.

1% phosphoric acid solution – Dilute 10 ml of concentrated phosphoric acid to a final volume of 1 L with water.

#### Kinase Assay

This assay involves the use of the <sup>32</sup>P radioisotope. All institutional guidelines regarding the use of radioisotopes should be followed.

1. Thaw the Active MLCK, Kinase Assay Buffer, Substrate Solution, and Kinase Dilution Buffer on ice. The  $\gamma$ -<sup>32</sup>P-ATP Assay Cocktail may be thawed at room temperature.
2. In a pre-cooled microcentrifuge tube, add the following solutions to a volume of 20 µl:  
 10 µl of Kinase Solution  
 5 µl of Substrate Solution  
 2.5 µl of cold water (4 °C)  
 2.5 µl of 5 mM CaCl<sub>2</sub> solution containing 0.75 µg Calmodulin
3. Set up a blank control as outlined in step 2, substituting 5 µl of cold water (4 °C) for the Substrate Solution.
4. Initiate each reaction with the addition of 5 µl of the  $\gamma$ -<sup>32</sup>P-ATP Assay Cocktail, bringing the final reaction volume to 25 µl. Incubate the mixture in a water bath at 30 °C for 15 minutes.
5. After the 15 minute incubation, stop the reaction by spotting 20 µl of the reaction mixture onto an individually pre-cut strip of phosphocellulose P81 paper.

6. Air dry the pre-cut P81 strip and sequentially wash in the 1% phosphoric acid solution with constant gentle stirring. It is recommended the strips be washed a total of 3 times of ~10 minutes each.
7. Set up a radioactive control to measure the total  $\gamma$ -<sup>32</sup>P-ATP counts introduced into the reaction. Spot 5 µl of the  $\gamma$ -<sup>32</sup>P-ATP Assay Cocktail on a pre-cut P81 strip. Dry the sample for 2 minutes and read the counts. Do not wash this sample.
8. Count the radioactivity on the P81 paper in the presence of scintillation fluid in a scintillation counter.
9. Determine the corrected cpm by subtracting the blank control value (see step 3) from each sample and calculate the kinase specific activity

#### Calculations:

1. Specific Radioactivity (SR) of ATP (cpm/nmole)

$$SR = \frac{\text{cpm of 5 } \mu\text{l of } \gamma\text{-}^{32}\text{P-ATP Assay Cocktail}}{\text{nmole of ATP}}$$

cpm – value from control (step 7)  
 nmole – 1.25 nmole (5 µl of 250 µM ATP Assay Cocktail)

2. Specific Kinase Activity (SA) (nmole/min/mg)

$$\text{nmole/min/mg} = \frac{\Delta\text{cpm} \times (25/20)}{SR \times E \times T}$$

SR = specific radioactivity of the ATP (cpm/nmole ATP)

$\Delta\text{cpm}$  = cpm of the sample – cpm of the blank (step 3)

25 = total reaction volume

20 = spot volume

T = reaction time (minutes)

E = amount of enzyme (mg)

#### References

1. Gao, Y. et al., Myosin light chain kinase as a multifunctional regulatory protein of smooth muscle contraction. *IUBMB Life*, **51**(6), 337-44 (2001).
2. Matsumura, F. et al., Role of myosin light chain phosphorylation in the regulation of cytokinesis. *Cell Struct. Funct.*, **26**(6), 639-44 (2001).

Precisio is a trademark of Sigma-Aldrich®  
 Biotechnology LP and Sigma-Aldrich Co.

JR,MAM 03/10-1

Sigma brand products are sold through Sigma-Aldrich, Inc.

Sigma-Aldrich, Inc. warrants that its products conform to the information contained in this and other Sigma-Aldrich publications. Purchaser must determine the suitability of the product(s) for their particular use. Additional terms and conditions may apply. Please see reverse side of the invoice or packing slip.