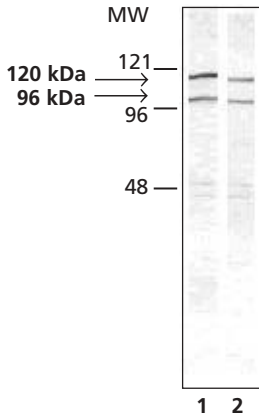


## Anti-Drebrin (D 3816)



### Immunoblot

Whole cell extracts of HeLa cells (lane 1) and MCF7 cells (lane 2), were separated on SDS-PAGE and blotted with Rabbit Anti-Drebrin (Product No. D 3816). The antibody was developed with Goat Anti-Rabbit IgG, Alkaline Phosphatase conjugate (Product No. A 9919) and SIGMA *FAST*<sup>™</sup> BCIP/NBT substrate (Product No. B 5655)