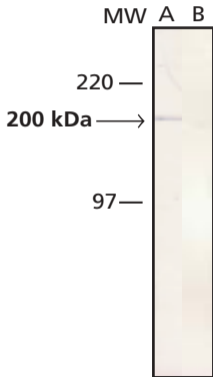


Monoclonal Anti-Myosin (Skeletal, Slow), Clone NOQ7.5.4D (M 8421)



Immunoblot

Whole cell extract of rabbit tongue was separated on SDS-PAGE and blotted with Monoclonal Anti-Myosin (Skeletal, Slow) (Product No. M 8421). The antibody was developed with Goat Anti-Mouse IgG (Fab), AlkPhos Conjugate (Product No. A 1293) and NBT/BCIP substrate.

Lane A: Antibody dilution 1:5,000

Lane B: Negative control (only secondary antibody)