

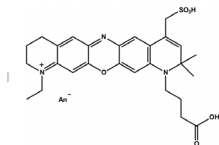
## 94875 Atto 680

### Application

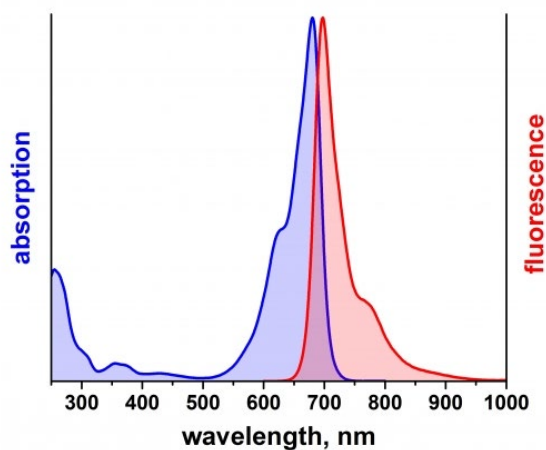
Atto 680 belongs to a new generation of fluorescent labels. The dye is designed for application in the area of life science, e.g. labeling of DNA, RNA or proteins. Characteristic features of the label are strong absorption, good fluorescence quantum yield, excellent thermal and photo-stability, and very little triplet formation. Atto 680 is a zwitterionic dye with a net electrical charge of zero. The fluorescence is efficiently quenched by electron donors like guanine, tryptophan, etc.

### Product Description

MW	631 g/mol
$\lambda_{\text{abs}}$	681 nm
$\epsilon_{\text{max}}$	$1.25 \times 10^5 \text{ M}^{-1} \text{ cm}^{-1}$
$\lambda_{\text{fl}}$	698 nm
$\eta_{\text{fl}}$	30 %
$\tau_{\text{fl}}$	1.7 ns
CF <sub>260</sub>	0.30
CF <sub>280</sub>	0.17



### Optical data of the carboxy derivative (in aqueous solution)



**Storage:** protected from moisture and light at -20°C

### Precautions and Disclaimer

This product is for R&D use only, not for drug, household, or other uses. Please consult the Material Safety Data Sheet for information regarding hazards and safe handling practices.

The vibrant M and Sigma-Aldrich are trademarks of Merck KGaA, Darmstadt, Germany or its affiliates. Detailed information on trademarks is available via publicly accessible resources.  
© 2018 Merck KGaA, Darmstadt, Germany and/or its affiliates. All Rights Reserved.

The life science business of Merck KGaA, Darmstadt, Germany operates as MilliporeSigma in the US and Canada.

