

# Millipore®

Preparation, Separation,  
Filtration & Monitoring Products

# MERCK



## Detection of Somatic Coliphages

**The European Directive 2020:2184 added coliphages as a parameter to be measured in water.**

Somatic coliphages can be detected using plaque assays as described in the set of ISO 10705 Standard. The process involves mixing a water sample with a culture of the host in a liquefied soft agar medium. This mixture is then poured onto pre-casted agar plates in petri dishes. After incubating overnight, the host cells form a continuous layer, or "lawn." If coliphages are present, they cause lysis of the host cells, resulting in visible plaques within the lawn.



## VIRAPREP® to concentrate sample by filtration

ISO10705-3 describes concentration techniques, including membrane filtration method, to reduce the amount of work. The new VIRAPREP® kit is compliant to this standard and operates by adsorbing coliphages onto cellulose- ester membranes using a binding buffer followed by an elution step and plating. Using Viraprep® kits to test 100 mL of water, only two plates are needed for inoculation instead of 20!

### Products ordering information:

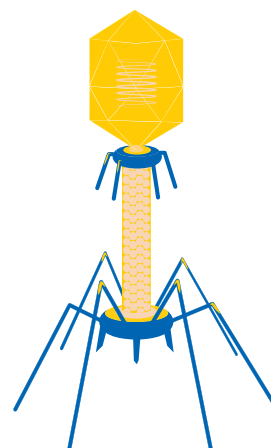
Code	Description	Format
AR00206	Somatic coliphages concentration kit	pack of 100 tests
PHIX174	VIRAPREP® Coliphage(ΦX174) Positive Control	pack of 1 × 20 tubes
BINDING-1	VIRAPREP® Binding Buffer	pack of 4 × 250 mL



### Scholten media products range according to ISO:

Code	Description	Format
5248-10x100 mL	SemiSolid Modified Scholten Agar (ss-MSA)*	Bottle 100 mL in 125 mL bottle (x10)
5247-10x200 mL	Modified Scholten Agar (MSA)*	Bottle 200 mL in 250 mL bottle (x10)
5249	Modified Scholten Broth (MSB)	Bottle 25 mL in 125 mL bottle (x10)

\*ss-MSA and MSA require the addition of Calcium Chloride.



To request more information contact your Merck representative or [click here](#)



To place an order or receive technical assistance:  
[SigmaAldrich.com/support](https://SigmaAldrich.com/support)



For local contact information:  
[SigmaAldrich.com/offices](https://SigmaAldrich.com/offices)

Merck KGaA  
Frankfurter Strasse 250  
64293 Darmstadt, Germany  
[SigmaAldrich.com](https://SigmaAldrich.com)

We have built a unique collection of life science brands with unrivalled experience in supporting your scientific advancements.

**Millipore® Sigma-Aldrich® Supelco® Milli-Q® SAFC® BioReliance®**

© 2024 Merck KGaA, Darmstadt, Germany and/or its affiliates. All Rights Reserved. Merck, the vibrant M, and Millipore are trademarks of Merck KGaA, Darmstadt, Germany or its affiliates. All other trademarks are the property of their respective owners. Detailed information on trademarks is available via publicly accessible resources.

MK\_FL13997EN Ver. 1.0 58592 10/2024

