

## 75118 Atto MB2

### Application

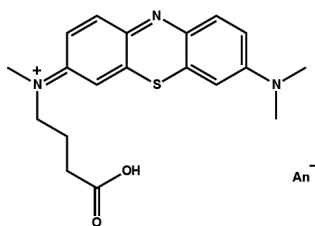
Atto MB2 is a derivative of the well-known redox dye Methylene Blue. The dye can be reversibly reduced to the colorless leuco form. Upon oxidation (e.g. with oxygen) the dye recovers, and the absorption is fully restored.

The dye is suitable for labeling of DNA, RNA, proteins etc. In common with most Atto-labels the dye shows a high extinction coefficient.

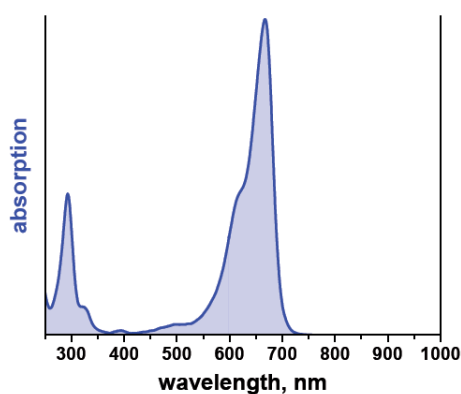
Atto MB2 is moderately hydrophilic.

### Product Description

MW	392 g/mol
$\lambda_{\text{abs}}$	668 nm
$\epsilon_{\text{max}}$	$1.0 \times 10^5 \text{ M}^{-1} \text{ cm}^{-1}$
CF <sub>260</sub>	0.08
CF <sub>280</sub>	0.24



### Optical data of the carboxy derivative (in aqueous solution)



**Storage:** protected from moisture and light at -20°C

### Precautions and Disclaimer

This product is for R&D use only, not for drug, household, or other uses. Please consult the Material Safety Data Sheet for information regarding hazards and safe handling practices.

The vibrant M and Sigma-Aldrich are trademarks of Merck KGaA, Darmstadt, Germany or its affiliates. Detailed information on trademarks is available via publicly accessible resources.  
© 2018 Merck KGaA, Darmstadt, Germany and/or its affiliates. All Rights Reserved.

The life science business of Merck KGaA, Darmstadt, Germany operates as MilliporeSigma in the US and Canada.

