

## Product Information

**BUB1B, active, GST-tagged, human  
PRECISIO® Kinase  
recombinant, expressed in *Sf9* cells**

Catalog Number **SRP5327**  
Storage Temperature  $-70^{\circ}\text{C}$

Synonyms: SSK1, BUBR1, Bub1A, MAD3L, hBUBR1, BUB1beta

### Product Description

BUB1B or budding uninhibited by benzimidazoles 1 homolog beta is involved in spindle checkpoint function and has been localized to the kinetochore. BUB1B plays a role in the inhibition of the anaphase-promoting complex/cyclosome (APC/C), delaying the onset of anaphase and ensuring proper chromosome segregation.<sup>1</sup> BUB1B links the regulation of chromosome-spindle attachment to mitotic checkpoint signaling.<sup>2</sup> BUB1B expression during the spindle checkpoint is dependent on residual BUB1B expression and impaired spindle checkpoint function has been found in many forms of cancer. BUB1B is essential for early embryonic development and normal hematopoiesis.

Recombinant human BUB1B (613-end) was expressed by baculovirus in *Sf9* insect cells using an N-terminal GST-tag. The gene accession number is NM\_001211. It is supplied in 50 mM Tris-HCl, pH 7.5, 150 mM NaCl, 10 mM glutathione, 0.1 mM EDTA, 0.25 mM DTT, 0.1 mM PMSF, and 25% glycerol.

Molecular mass: ~73 kDa

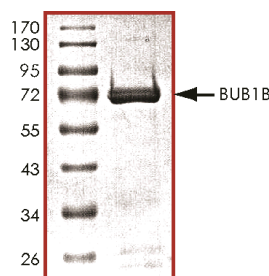
### Precautions and Disclaimer

This product is for R&D use only, not for drug, household, or other uses. Please consult the Material Safety Data Sheet for information regarding hazards and safe handling practices.

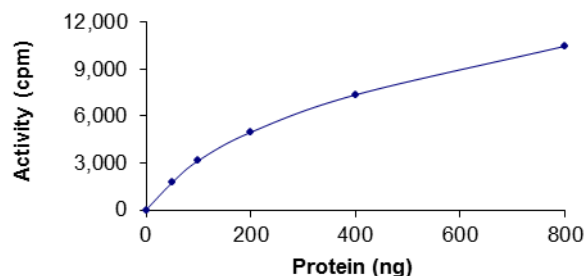
### Storage/Stability

The product ships on dry ice and storage at  $-70^{\circ}\text{C}$  is recommended. After opening, aliquot into smaller quantities and store at  $-70^{\circ}\text{C}$ . Avoid repeated handling and multiple freeze/thaw cycles.

**Figure 1.**  
SDS-PAGE Gel of Typical Lot:  
 $\geq 70\%$  (SDS-PAGE, densitometry)



**Figure 2.**  
Specific Activity of Typical Lot:  
1.2–1.8 nmole/min/mg



### Procedure

#### Preparation Instructions

Kinase Assay Buffer – 25 mM MOPS, pH 7.2, 12.5 mM glycerol 2-phosphate, 25 mM  $\text{MgCl}_2$ , 5 mM EGTA, and 2 mM EDTA. Just prior to use, add DTT to a final concentration of 0.25 mM.

Kinase Dilution Buffer – Dilute the Kinase Assay Buffer 5-fold with a 50 ng/ $\mu\text{L}$  BSA solution.

Kinase Solution – Dilute the active BUB1B (0.1 µg/µL) with Kinase Dilution Buffer to the desired concentration.

**Note:** The specific activity plot may be used as a guideline (see Figure 2). It is recommended the researcher perform a serial dilution of active BUB1B kinase for optimal results.

10 mM ATP Stock Solution – Dissolve 55 mg of ATP in 10 mL of Kinase Assay Buffer. Store in 200 µL aliquots at –20 °C.

γ-<sup>33</sup>P-ATP Assay Cocktail (250 µM) – Combine 5.75 mL of Kinase Assay Buffer, 150 µL of 10 mM ATP Stock Solution, 100 µL of γ-<sup>33</sup>P-ATP (1 mCi/100 µL). Store in 1 mL aliquots at –20 °C.

Substrate Solution – RS Repeat Peptide substrate (GRSRSRSRSRSRSR) diluted in distilled water to a final concentration of 1 mg/mL.

1% phosphoric acid solution – Dilute 10 mL of concentrated phosphoric acid to a final volume of 1 L with water.

#### Kinase Assay

This assay involves the use of the <sup>33</sup>P radioisotope. All institutional guidelines regarding the use of radioisotopes should be followed.

1. Thaw the active BUB1B, Kinase Assay Buffer, Substrate Solution, and Kinase Dilution Buffer on ice. The γ-<sup>33</sup>P-ATP Assay Cocktail may be thawed at room temperature.
2. In a pre-cooled microcentrifuge tube, add the following solutions to a volume of 20 µL:
  - 10 µL of Kinase Solution
  - 5 µL of Substrate Solution
  - 5 µL of cold water (4 °C)
3. Set up a blank control as outlined in step 2, substituting 5 µL of cold water (4 °C) for the Substrate Solution.
4. Initiate each reaction with the addition of 5 µL of the γ-<sup>33</sup>P-ATP Assay Cocktail, bringing the final reaction volume to 25 µL. Incubate the mixture in a water bath at 30 °C for 15 minutes.
5. After the 15 minute incubation, stop the reaction by spotting 20 µL of the reaction mixture onto an individually precut strip of phosphocellulose P81 paper.

6. Air dry the precut P81 strip and sequentially wash in the 1% phosphoric acid solution with constant gentle stirring. It is recommended the strips be washed a total of 3 times of ~10 minutes each.
7. Set up a radioactive control to measure the total γ-<sup>33</sup>P-ATP counts introduced into the reaction. Spot 5 µL of the γ-<sup>33</sup>P-ATP Assay Cocktail on a precut P81 strip. Dry the sample for 2 minutes and read the counts. Do not wash this sample.
8. Count the radioactivity on the P81 paper in the presence of scintillation fluid in a scintillation counter.
9. Determine the corrected cpm by subtracting the blank control value (see step 3) from each sample and calculate the kinase specific activity

#### Calculations:

1. Specific Radioactivity (SR) of ATP (cpm/nmole)

$$SR = \frac{\text{cpm of 5 } \mu\text{L of } \gamma\text{-}^{33}\text{P-ATP Assay Cocktail}}{\text{nmole of ATP}}$$

cpm – value from control (step 7)  
nmole – 1.25 nmole (5 µL of 250 µM ATP Assay Cocktail)

2. Specific Kinase Activity (SA) (nmole/min/mg)

$$\text{nmole/min/mg} = \frac{\Delta\text{cpm} \times (25/20)}{SR \times E \times T}$$

SR = specific radioactivity of the ATP (cpm/nmole ATP)

Δcpm = cpm of the sample – cpm of the blank (step 3)

25 = total reaction volume

20 = spot volume

T = reaction time (minutes)

E = amount of enzyme (mg)

#### References

1. Rio Frio et al., Homozygous BUB1B mutation and susceptibility to gastrointestinal neoplasia. *New Eng. J. Med.*, **363**, 2628-2637 (2010).
2. Lampson, M.A., et al., The human mitotic checkpoint protein BubR1 regulates chromosome-spindle attachments. *Nature Cell Biol.*, **7**, 93-98 (2005).

PRECISIO is a registered trademark of Sigma-Aldrich Co. LLC.

RC,MAM 12/12-1