

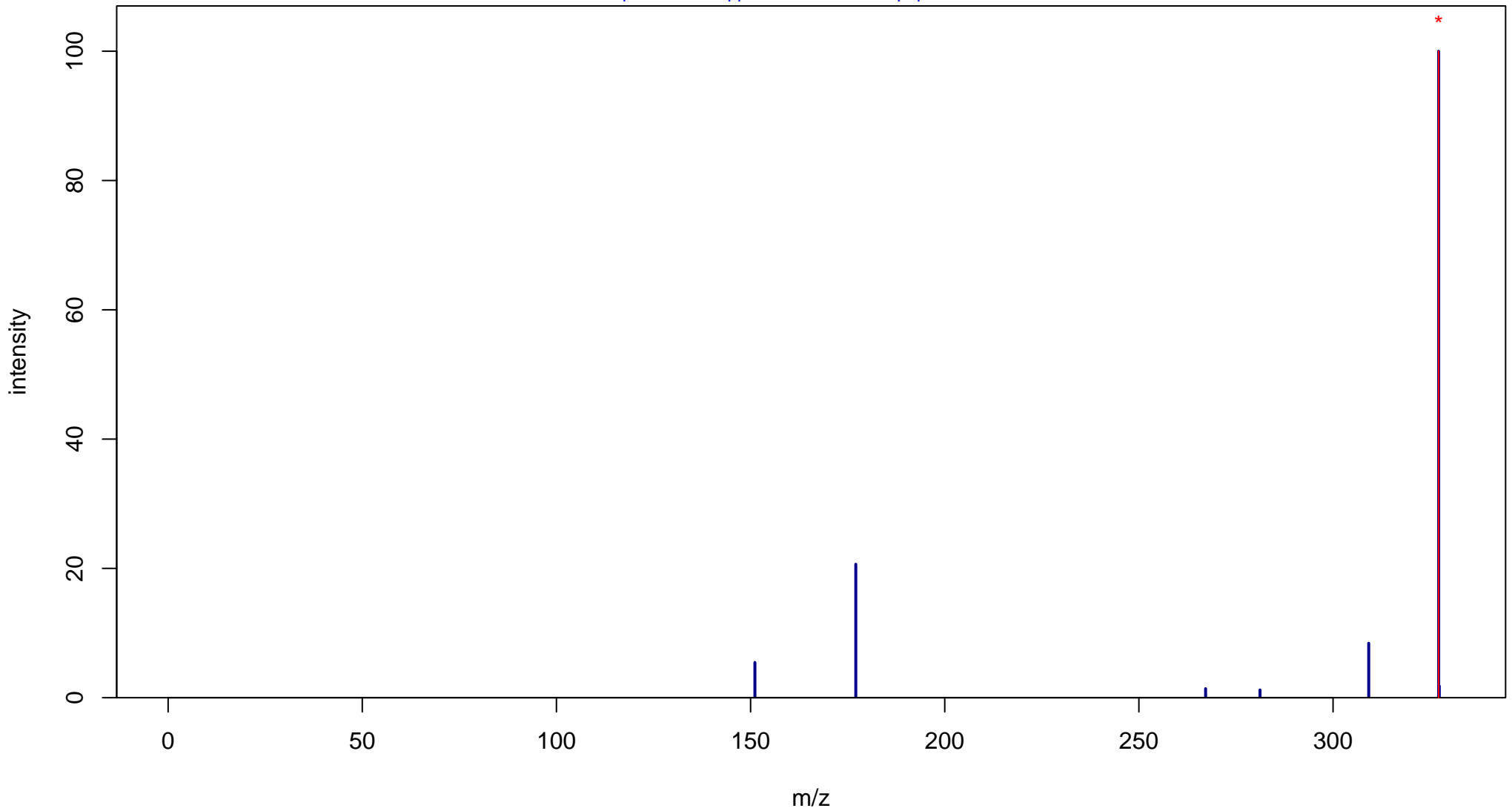
Acitretin

Mass: 326.1882 Formula: C₂₁H₂₆O₃

mode: + collisionE: 0V

METLIN ID: 564 SIGMA Prod: 44707

http://metlin.scripps.edu/metabo_info.php?molid=564



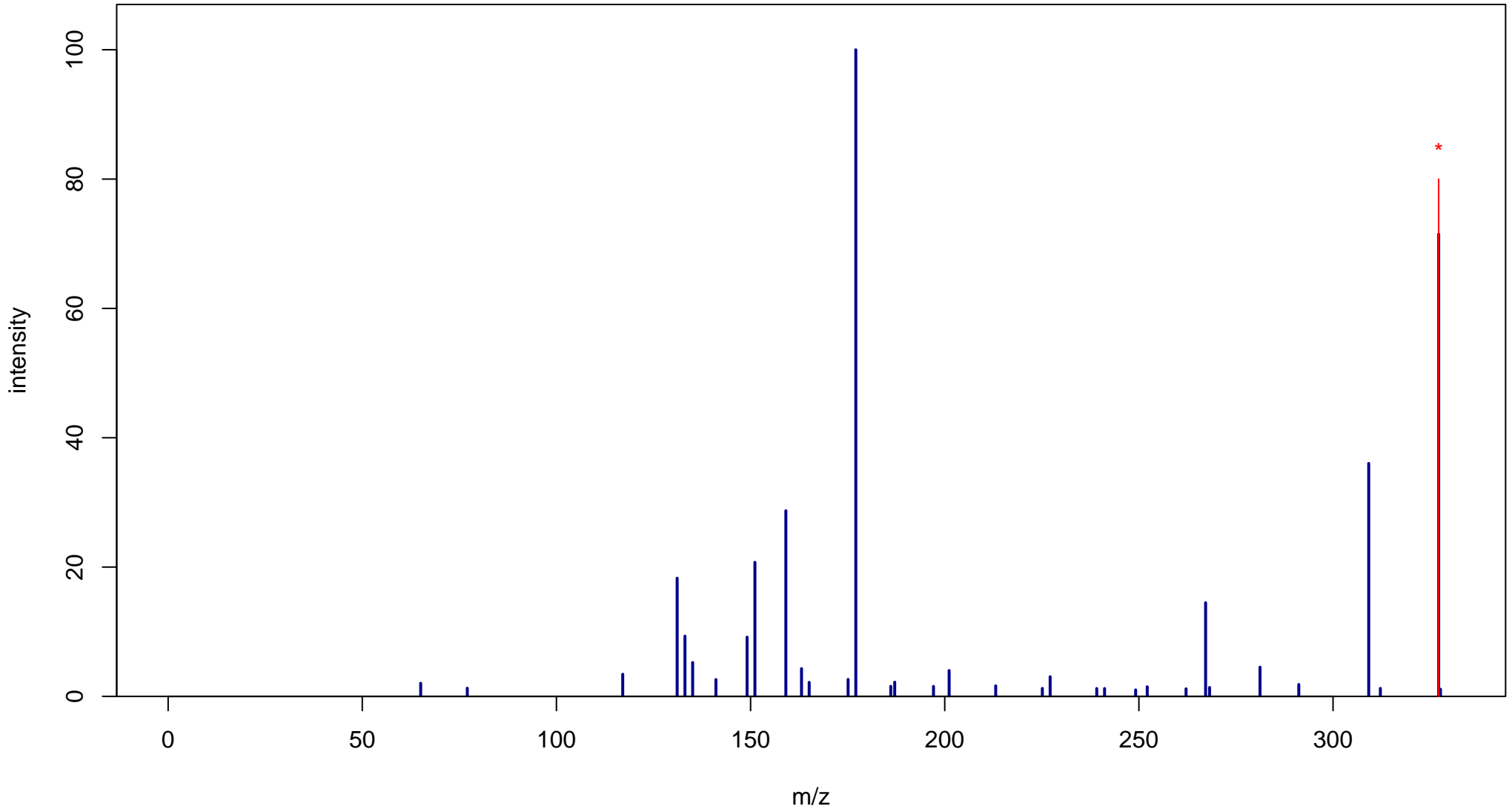
Acitretin

Mass: 326.1882 Formula: C₂₁H₂₆O₃

mode: + collisionE: 10V

METLIN ID: 564 SIGMA Prod: 44707

http://metlin.scripps.edu/metabo_info.php?molid=564



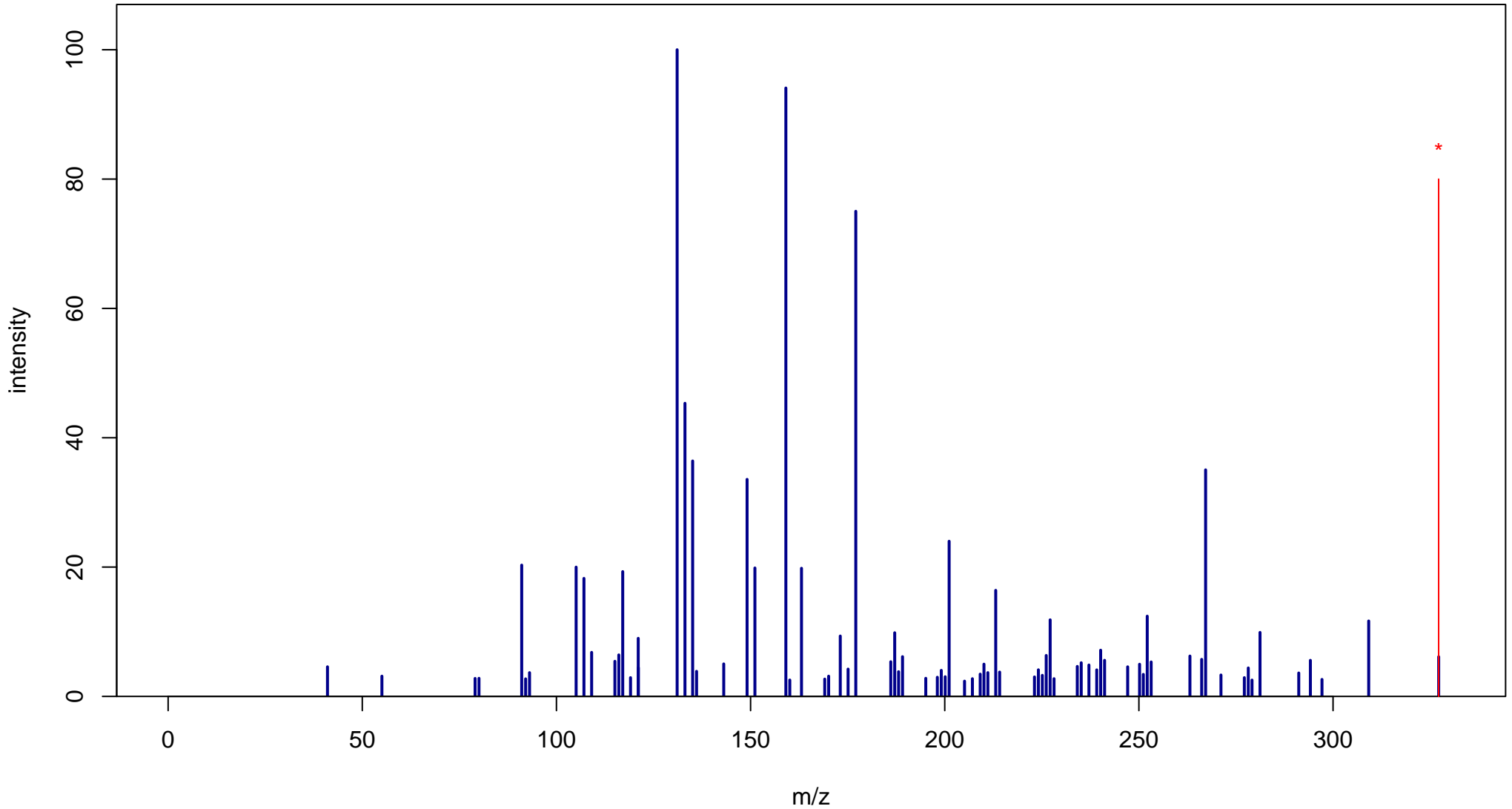
Acitretin

Mass: 326.1882 Formula: C₂₁H₂₆O₃

mode: + collisionE: 20V

METLIN ID: 564 SIGMA Prod: 44707

http://metlin.scripps.edu/metabo_info.php?molid=564



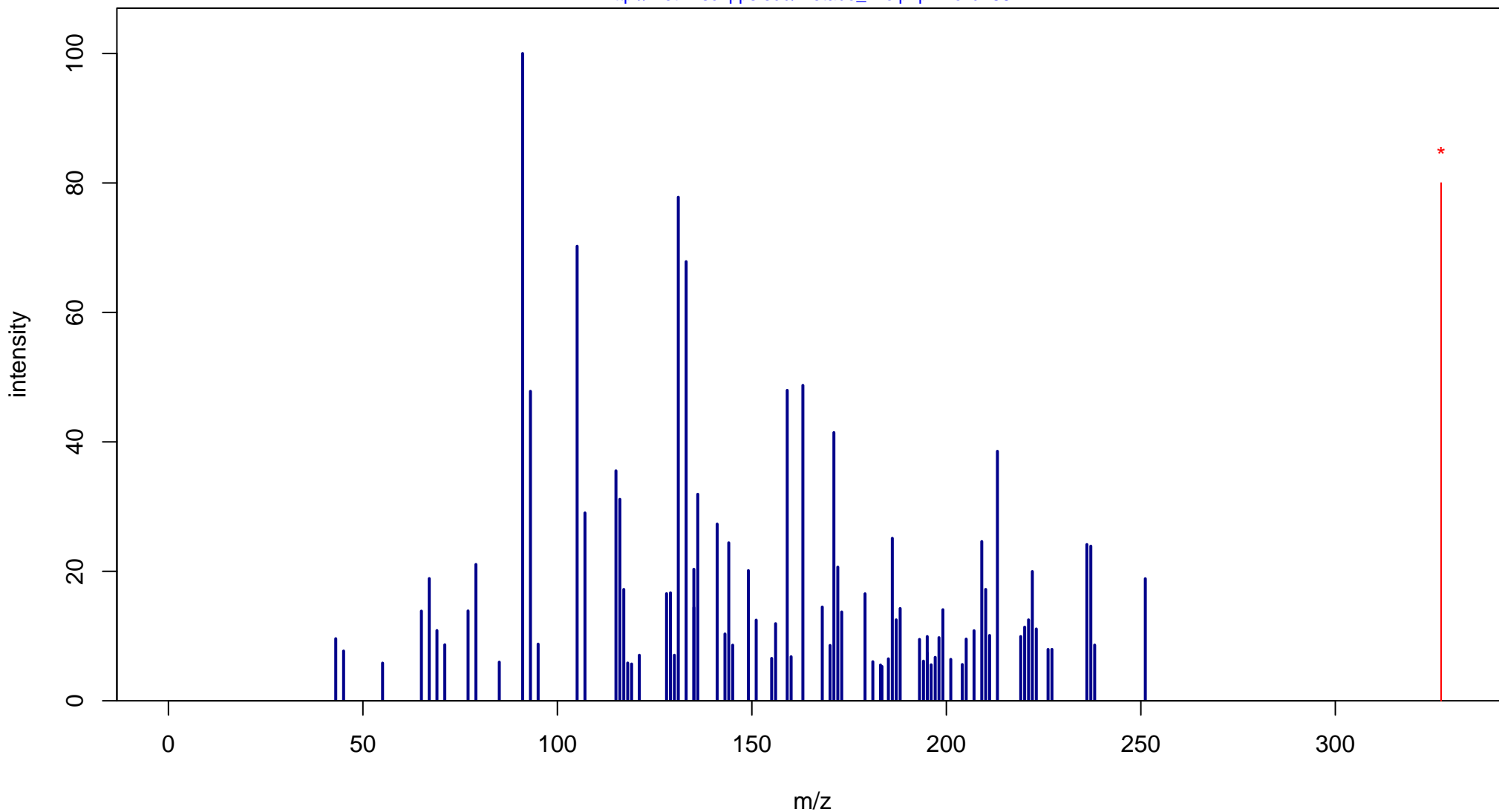
Acitretin

Mass: 326.1882 Formula: C₂₁H₂₆O₃

mode: + collisionE: 40V

METLIN ID: 564 SIGMA Prod: 44707

http://metlin.scripps.edu/metabo_info.php?molid=564



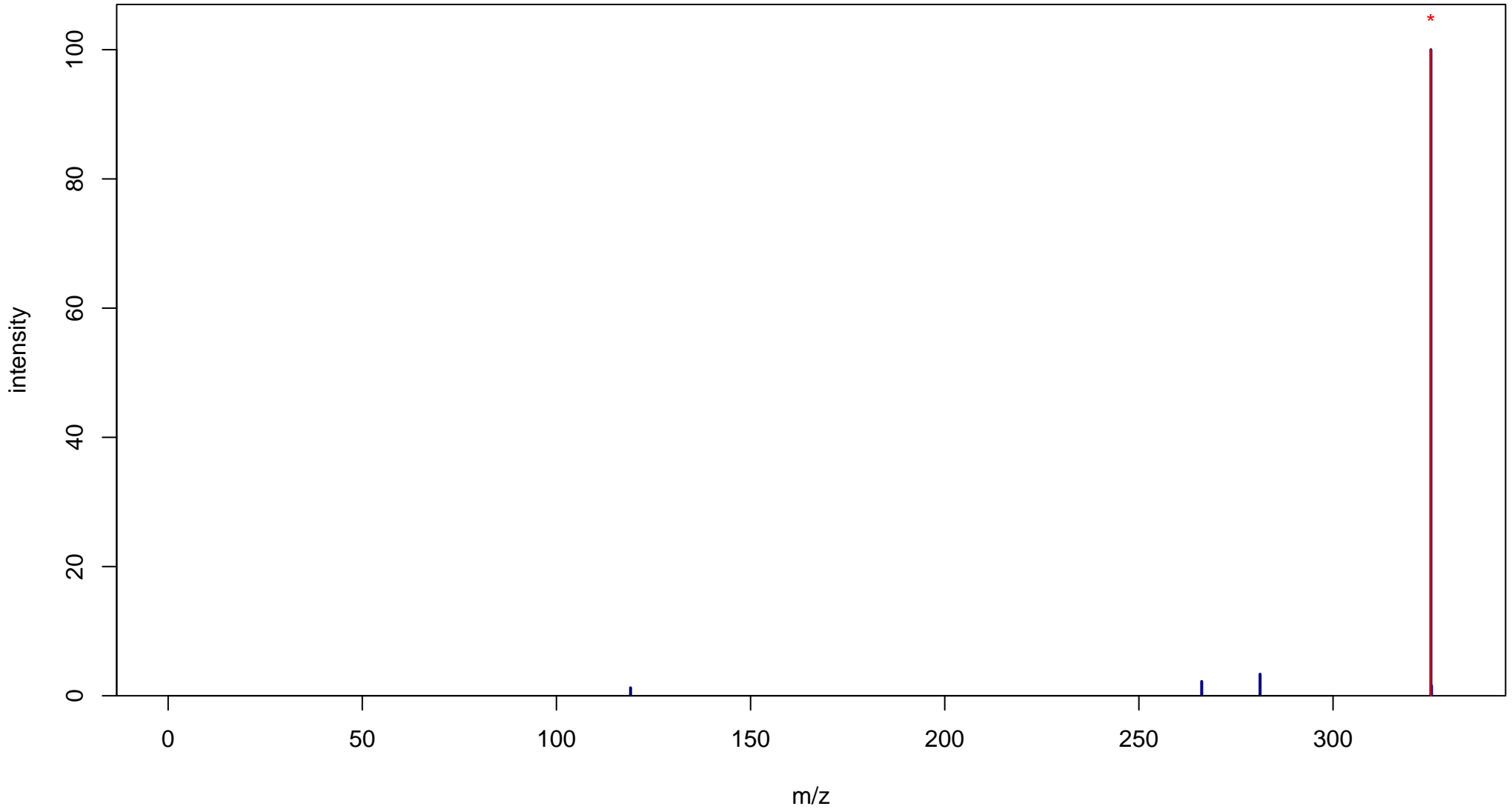
Acitretin

Mass: 326.1882 Formula: C₂₁H₂₆O₃

mode: - collisionE: 0V

METLIN ID: 564 SIGMA Prod: 44707

http://metlin.scripps.edu/metabo_info.php?molid=564



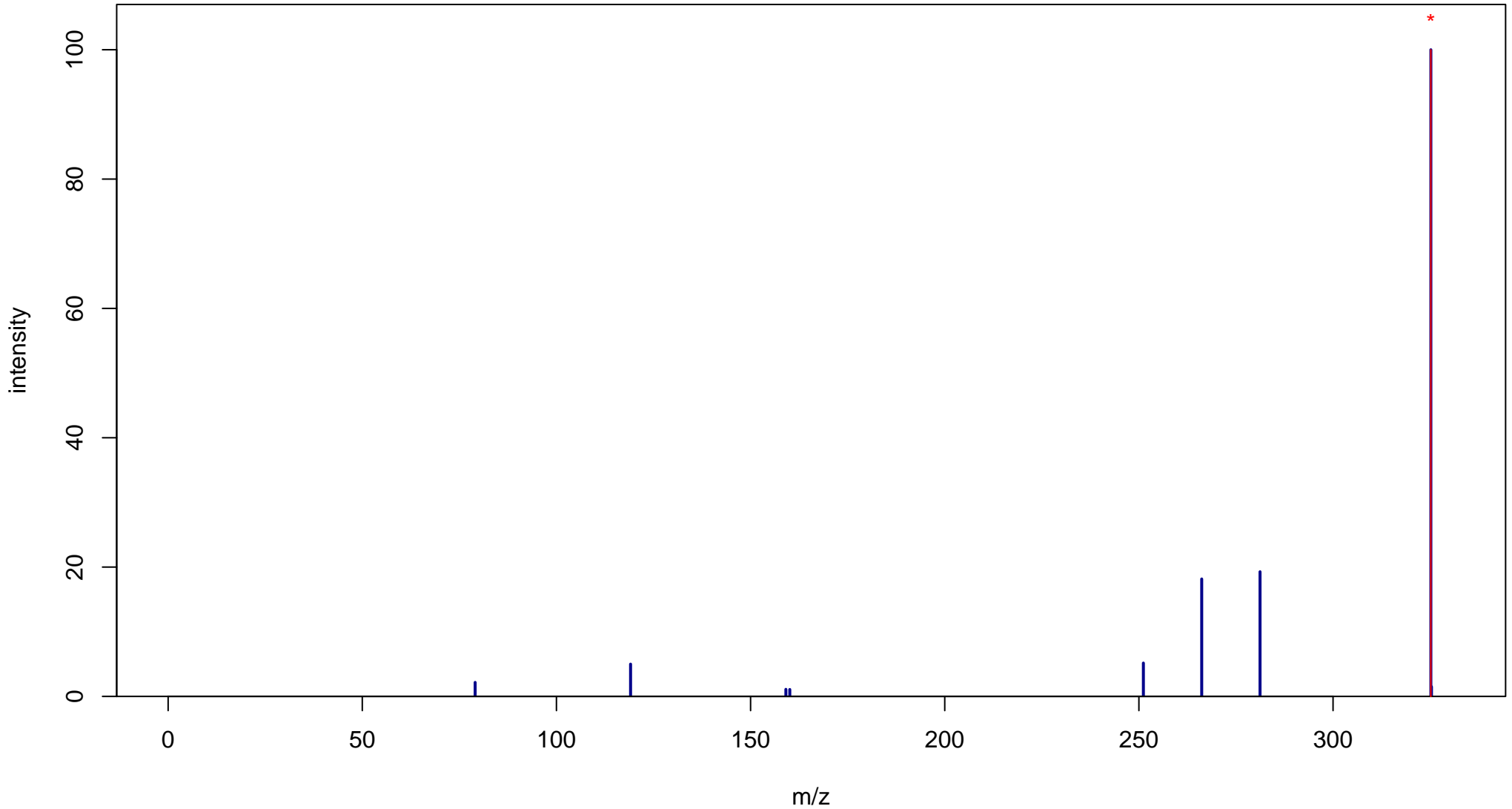
Acitretin

Mass: 326.1882 Formula: C₂₁H₂₆O₃

mode: - collisionE: 10V

METLIN ID: 564 SIGMA Prod: 44707

http://metlin.scripps.edu/metabo_info.php?molid=564



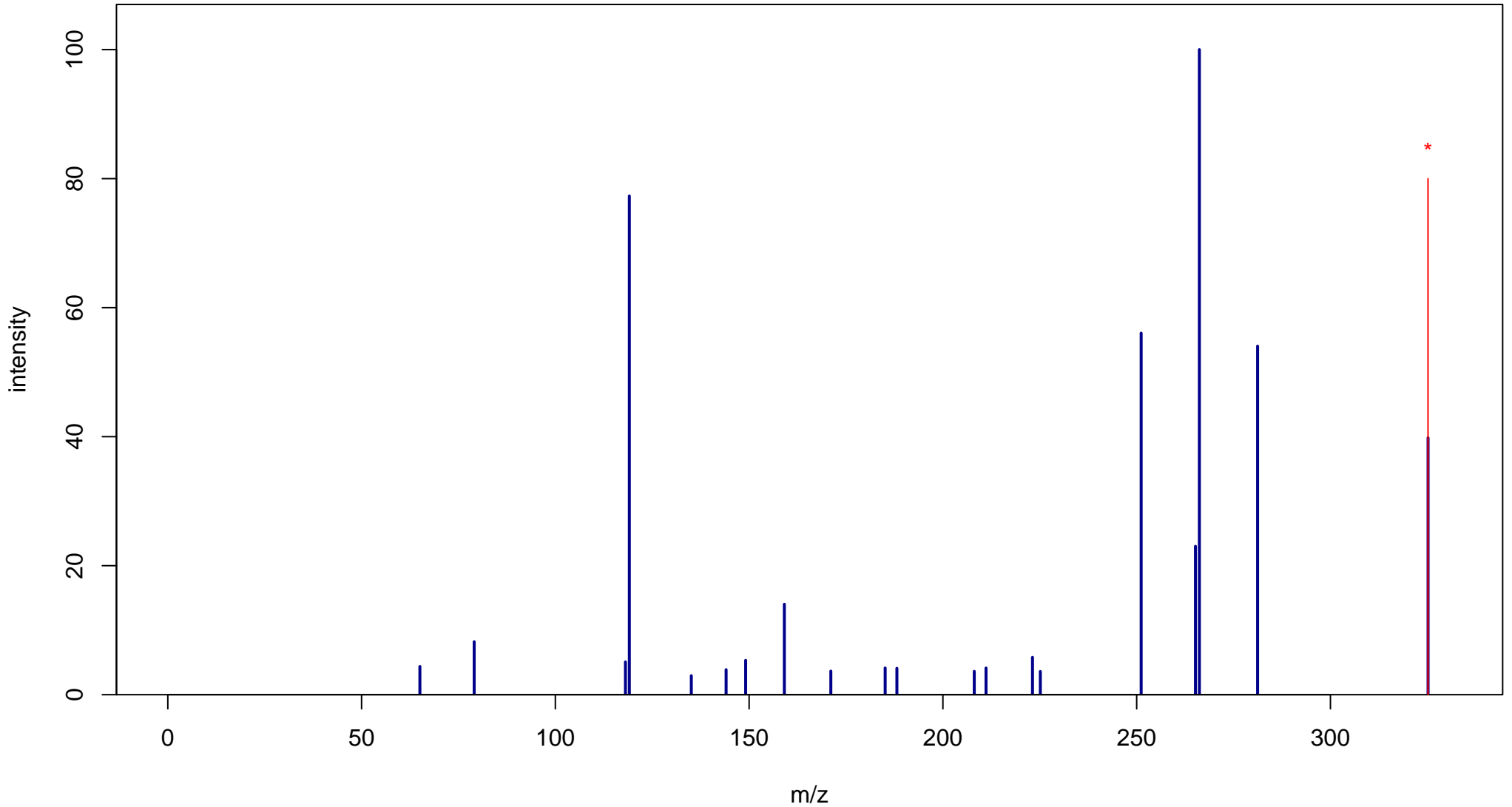
Acitretin

Mass: 326.1882 Formula: C₂₁H₂₆O₃

mode: - collisionE: 20V

METLIN ID: 564 SIGMA Prod: 44707

http://metlin.scripps.edu/metabo_info.php?molid=564



Acitretin

Mass: 326.1882 Formula: C₂₁H₂₆O₃

mode: - collisionE: 40V

METLIN ID: 564 SIGMA Prod: 44707

http://metlin.scripps.edu/metabo_info.php?molid=564

