

Quick Start Guide

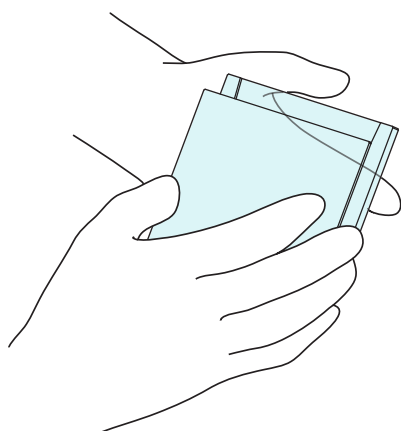
mPAGE® Gel Caster

Use your smartphone's camera app for quick access to the User Guide or go to the product page at SigmaAldrich.com.

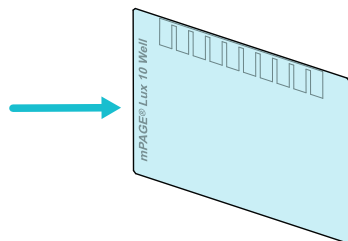


Gel Caster Assembly

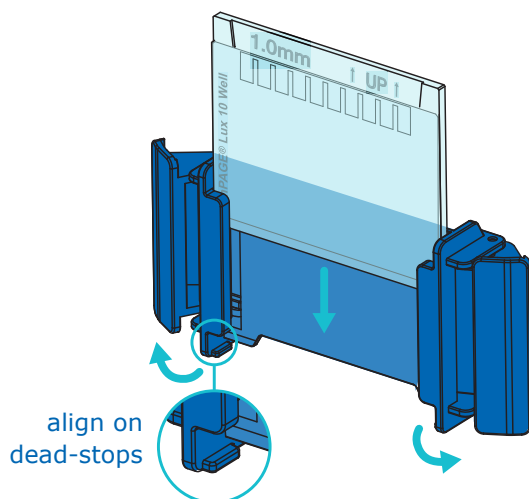
1. Align the short plate in front of the spacer plate to form a cassette.



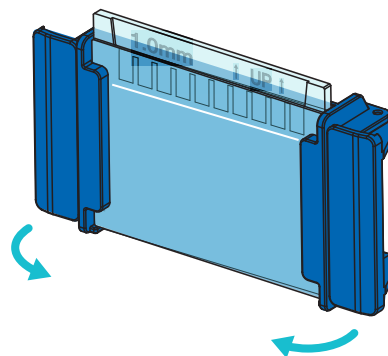
Note: If assembling with the mPAGE® Lux Gel Casting System, ensure the text on the short plate is oriented on the left side.



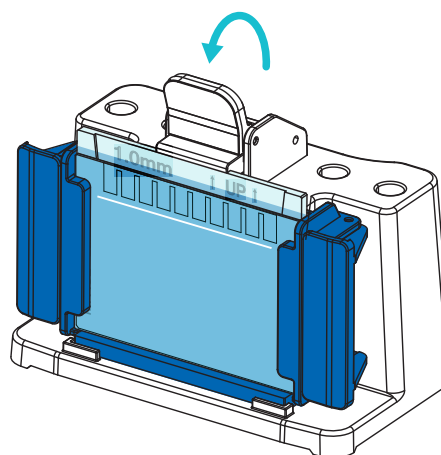
2. With side clamps open, slide cassette into caster frame until aligned on the dead-stops located on the bottom.



3. Secure glass cassette by swinging side clamps inward.

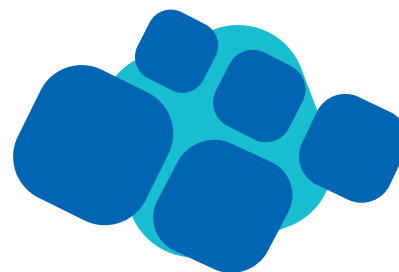


4. Place sealing gasket between the alignment tabs on the bottom of the gel caster base. Place the assembled caster frame onto the caster base and raise the tension clip to seal cassette against the gasket.



Recommended Volumes

		Spacer Plate Size		
		0.75 mm	1.0 mm	1.5 mm
Maximum Sample Volume per Well	10 well	33 µL	43 µL	62 µL
	15 well	20 µL	26 µL	39 µL
Gel Casting Volumes	Resolving Solution	3.75 mL	5.0 mL	7.5 mL
	Stacking Solution	1.0 mL	1.4 mL	2.0 mL



Product Ordering

mPAGE® Accessories

Description	Size	Wells	Qty Per Pack	Catalogue Number
mPAGE® Combs	0.75 mm	10	5	C75M10W
	0.75 mm	15	5	C75M15W
	1.0 mm	10	5	C1M10W
	1.0 mm	15	5	C1M15W
	1.5 mm	10	5	C15M10W
	1.5 mm	15	5	C15M15W
mPAGE® Mini Spacer Plates	0.75 mm		5	MSPA75
	1.0 mm		5	MSPA10
	1.5 mm		5	MSPA15
mPAGE® Mini Short Plates			10	MSHRT
mPAGE® Gel Caster Sealing Gaskets			5	GCSEAL
mPAGE® Casting Plate Rack			1	CPS1
mPAGE® Lux Masked Short Plates (for use with LUXCSYS)	Use with 10-well combs		5	LUXSHRTP10W
	Use with 15-well combs		5	LUXSHRTP15W

Reagents

Description	Size	Catalogue Number
mPAGE® Gel Casting Device Kits	0.75 mm	MGCK-75M
	1.0 mm	MGCK-10M
	1.5 mm	MGCK-15M
mPAGE® Lux Casting Systems	0.75 mm	LUXCSYS-75M
	1.0 mm	LUXCSYS-1M
	1.5 mm	LUXCSYS-15M
mPAGE® TurboMix Bis-Tris Polyacrylamide Gel Casting Kit		TMKIT-60
mPAGE® Lux Bis-Tris Reagent Kit		LUXRGTKIT

Notice

We provide information and advice to our customers on application technologies and regulatory matters to the best of our knowledge and ability, but without obligation or liability. Existing laws and regulations are to be observed in all cases by our customers. This also applies in respect to any rights of third parties. Our information and advice do not relieve our customers of their own responsibility for checking the suitability of our products for the envisaged purpose.

The information in this document is subject to change without notice and should not be construed as a commitment by the manufacturing or selling entity, or an affiliate. We assume no responsibility for any errors that may appear in this document.

Technical Assistance

Visit the tech service page on our web site at SigmaAldrich.com/TechService.

Terms and Conditions of Sale

Warranty, use restrictions, and other conditions of sale may be found at SigmaAldrich.com/Terms.

Contact Information

For the location of the office nearest you, go to SigmaAldrich.com/Offices.

Merck, Millipore, mPAGE and Sigma-Aldrich are trademarks of Merck KGaA, Darmstadt, Germany or its affiliates. All other trademarks are the property of their respective owners. Detailed information on trademarks is available via publicly accessible resources.
© 2022-2023 Merck KGaA, Darmstadt, Germany and/or its affiliates. All Rights Reserved.

The life science business of Merck operates as MilliporeSigma in the U.S. and Canada.