

Caffeine, Choline, Taurine, Inositol and Carnitine

SeQuant® ZIC®-HILIC

Chromatographic Conditions

Column: SeQuant® ZIC®-HILIC (3.5 µm, 100 Å) 150x2.1 mm 1.50442.0001

Injection: 5 µl

Detection: ELSD (Sedere Sedex 85LT), 40°C, 3,5 bar pressurized air, Gain 6

Flow Rate: 0.4 mL/min

Mobile Phase (v/v): A: Acetonitrile and ammonium acetate 100 mM, pH 4.5. (90:10 v/v)

B: Ammonium acetate 100 mM, pH 4.5

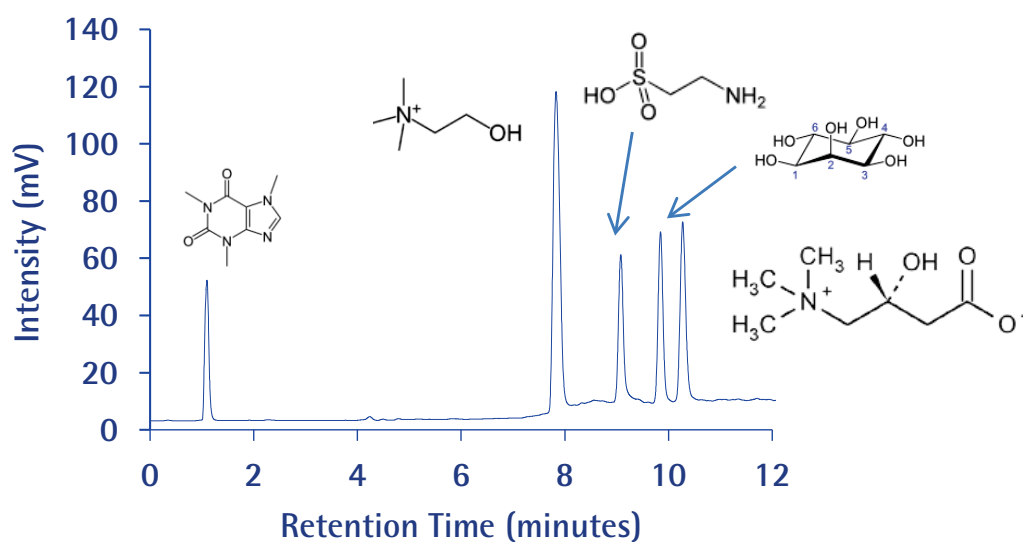
Gradient: See Table

Time (min)	Solution A	Solution B	Elution
0.0-2.0	100	0	isocratic
2.01-12.0	100→60	0→40	gradient
12.01-17.0	100	0	equilibration

Temperature: 30°C

Diluent Initial mobile phase

Sample: 0.5 mg/mL of caffeine, taurine, inositol carnitine, and 0.75 mg/mL of Choline in diluent



Chromatographic Data

No.	Compound	Retention Time (min)	Resolution	Tailing Factor
1	Caffeine	1.1	-	1.1
2	Choline	7.8	35.6	1.3
3	Taurine	9.1	6.2	1.3
4	Inositol	9.8	4.6	1.1
5	Carnitine	10.3	2.3	1.2