

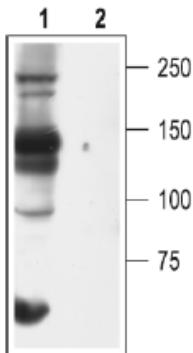


**RABBIT ANTI-Ca<sub>v</sub>3.2  
AFFINITY PURIFIED  
POLYCLONAL ANTIBODY**

<b>CATALOG NUMBER:</b>	AB9826-50UL
<b>LOT NUMBER:</b>	
<b>QUANTITY:</b>	50 µL
<b>CONCENTRATION:</b>	1.3 mg/mL (after reconstitution)
<b>SPECIFICITY:</b>	Recognizes Ca <sub>v</sub> 3.2 (α1H (T-Type)).
<b>IMMUNOGEN:</b>	Purified peptide from amino acids 581-595 of rat Ca <sub>v</sub> 3.2 (Accession number Q9EQ60).
<b>APPLICATIONS:</b>	Western blot: 1:200 using ECL on ND7/23 cell lysate (mouse neuroblastoma x rat DRG neuron hybrid cell line). Dilutions should be made using a carrier protein such as BSA (1-3%). Optimal working dilutions must be determined by the end user.
<b>CONTROL ANTIGEN:</b>	Included free of charge with the antibody is XX µg of control antigen (lyophilized powder). The stock solution of the antigen can be made up using 100 µL of sterile deionized water. For negative control, preincubate 1 µg of peptide with 1 µg of antibody for one hour at room temperature. Optimal concentrations must be determined by the end user.
<b>SPECIES REACTIVITIES:</b>	Rat. Other species have not been tested. The immunogen sequence is 14 of 15 amino acids identical in mouse, bovine and canine and 13 of 15 amino acids identical in human.
<b>FORMAT:</b>	Affinity purified immunoglobulin.
<b>PRESENTATION:</b>	Lyophilized from phosphate buffered saline, pH 7.4, containing 1% BSA, and 0.05% sodium azide as a preservative. Reconstitute with 50 µL of sterile deionized water. Centrifuge antibody preparation before use (10,000 xg for 5 min).
<b>STORAGE/HANDLING:</b>	Maintain lyophilized material at -20°C for up to 12 months after date of receipt. After reconstitution maintain at -20°C in undiluted aliquots for up to 6 months. Avoid repeated freeze/thaw cycles.

## SUGGESTED WESTERN BLOT PROTOCOL

1. Mix the samples (organ membranes: 50 µg/lane; transfected cells: 500,000 cells/lane) with sample-buffer X 2, and heat 10 min at 70°C.
2. 5-50 µL applied to Minigel lane (0.75-1.5 mm width) and run at standard conditions. (60 mA for 2 1.5 mm Minigel gels, 1.4 h). It is suggested that you run 5-15% acrylamide (37.5:1 acrylamide:bisacrylamide) minigel (1.5 mm width) at 30 mA/gel ~1-1.5 hours.
3. Transfer in semi-dry system under standard conditions (3 h 100 mA for two minigel gels)
4. Stain the transferred bands with Chemicon BLOT-FastStain (Catalog Number 2076).
5. Destain with deionized water.
6. Block with 5% non-fat milk (Marvel or Carnation) in PBS, and 0.025 % sodium azide, overnight at 2-8°C. The non-fat milk should be dissolved freshly, centrifuged 10,000 rpm for 10 min, and filtered through glass filter (Gelman Acrodisc).
7. Incubation with first antibody 2 h at room temperature or overnight at 4°C in blocking solution. The antibody preparation should be centrifuged before use (10,000 g 5 min.). Optimal working dilutions and incubation time will need to be determined by the end user.
8. Wash 4 x 10 min. with PBS-0.1% tween 20. From this stage, azide should be omitted.
9. Incubation with the secondary antibody (HRP-conjugated goat anti-rabbit antibody, for example Chemicon Catalog Number AP132P, diluted appropriately) 1 h at room temperature.
10. Wash 4 x 10 min. with PBS-0.1% tween 20.
11. Perform ECL with commercial kits (Chemilucifer, Chemicon Catalog Number 2600).



Western blotting of ND7/23 cell lysate:

1. AB9826, 1:200.
2. AB9826, preincubated with the control peptide antigen.

**Important Note:** *During shipment, small volumes of product will occasionally become entrapped in the seal of the product vial. For products with volumes of 200 µL or less, we recommend gently tapping the vial on a hard surface or briefly centrifuging the vial in a tabletop centrifuge to dislodge any liquid in the container's cap.*

FOR RESEARCH USE ONLY; NOT FOR USE IN DIAGNOSTIC PROCEDURES. NOT FOR HUMAN OR ANIMAL CONSUMPTION

Unless otherwise stated in our catalog or other company documentation accompanying the product(s), our products are intended for research use only and are not to be used for any other purpose, which includes but is not limited to, unauthorized commercial uses, in vitro diagnostic uses, ex vivo or in vivo therapeutic uses or any type of consumption or application to humans or animals.



©2006 - 2011: Millipore Corporation. All rights reserved. No part of these works may be reproduced in any form without permission in writing.