



Rabbit Anti-human AIF IHC-Paraffin Staining Summary

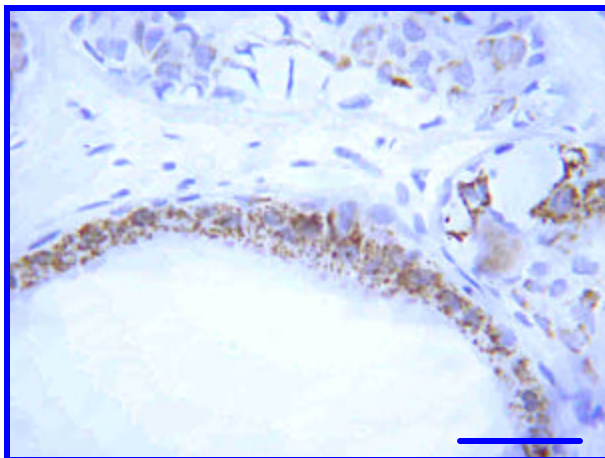
| | |
|--------------------------------------|--|
| Target Antigen: | Anti-AIF [Apoptosis Inducing Factor] (Internal) Rabbit Polyclonal Antibody |
| Catalog or ID #: | AB16501 |
| Host and Isotype: | Rabbit IgG |
| Clone and/or Lot #: | 22011141 |
| Purity and Method: | IgG Ion Exchange Chromatography |
| Concentration and Quantity: | 1.0mg/ml |
| Storage Conditions: | 2-4.0°C refrigerated |
| Species Reactivity: | Human. Mouse and Rat Not Tested |
| IHC-Paraffin Fixation Tested: | 10% neutral Buffered Formalin |
| IHC-Paraffin Titer: | 5.0 - 20.0µg/ml |
| IHC-Paraffin Pretreatment(s): | Heat Induced Epitope Retrieval (HIER) with Citrate pH 6.0, or EDTA pH 8.0, or TE pH 9.0 |
| IHC-Paraffin Protocol: | IHC-Select, HRP-DAB (Brief Outline): Blocking Reagent for 5 min. Primary Antibody (or Negative Control Reagent) for 10 min. Biotinylated Secondary Antibody for 10 min. Streptavidin-HRP for 10 min. DAB for 10 min. Hematoxylin for 1 min. |
| Positive Tissue(s): | Tissues known to contain a high index of apoptotic figures such as carcinomas e.g., Human Breast Carcinoma. |
| Subcellular Location(s): | Cytoplasmic Granular and Occasional Nuclear Staining. |
| Negative Tissue(s): | Most normal tissues. |
| Comments and References: | Staining is as expected since granular appearance is due to well established cellular apoptotic morphological changes, such as blebbing of cell membrane, chromatin condensation, margination and apoptotic bodies. |



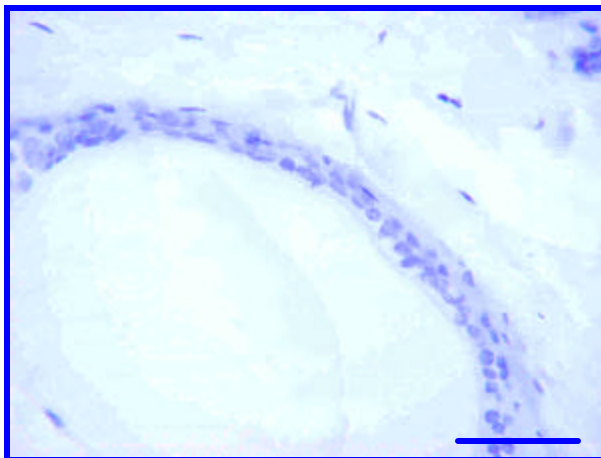
CHEMICON
INTERNATIONAL

IHC – Paraffin Staining Examples:

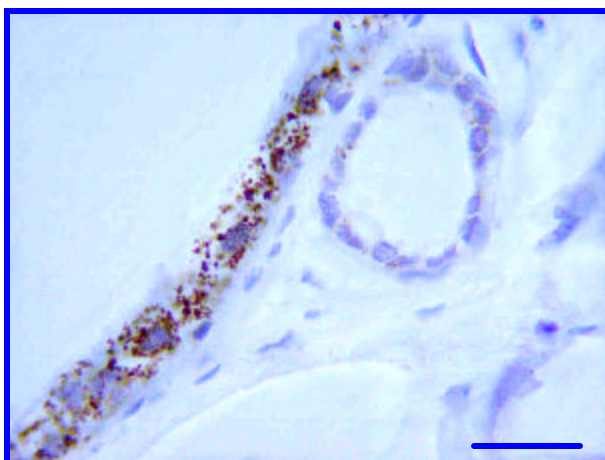
Pictures of Optimal Staining: Human Breast Carcinoma:



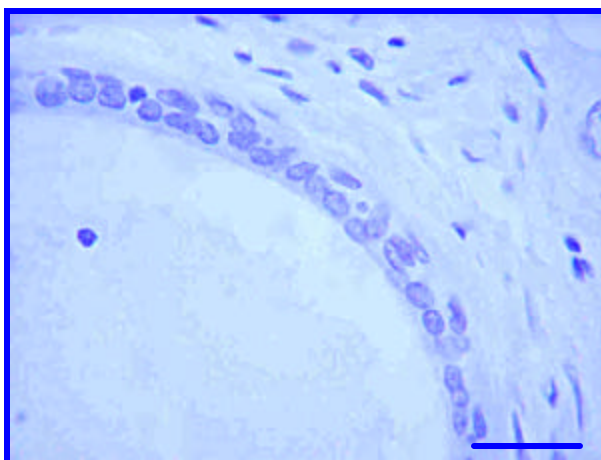
Rabbit anti-AIF (AB16501) staining of Human Breast Carcinoma. Tissue pretreated with Citrate Buffer, pH 6.0, anti-AIF at 20 μ g/ml, IHC-Select Detection with HRP-DAB. Ductal epithelial cells stain strongly (brown). Bar = 50 μ m.



Negative Control staining of Human Breast Carcinoma. Tissue pretreated with Citrate Buffer, pH 6.0, Negative Control Reagent IHC-Select Detection with HRP-DAB. No background staining is detected. Bar = 50 μ m.



Rabbit anti-AIF (AB16501) staining of Human Breast Carcinoma. Tissue pretreated with Citrate Buffer, pH 6.0, anti-AIF at 20 μ g/ml, IHC-Select Detection with HRP-DAB. Ductal epithelial cells stain strongly (brown). Bar = 25 μ m.



Negative Control staining of Human Breast Carcinoma. Tissue pretreated with Citrate Buffer, pH 6.0, Negative Control Reagent IHC-Select Detection with HRP-DAB. No background staining is detected. Bar = 25 μ m.

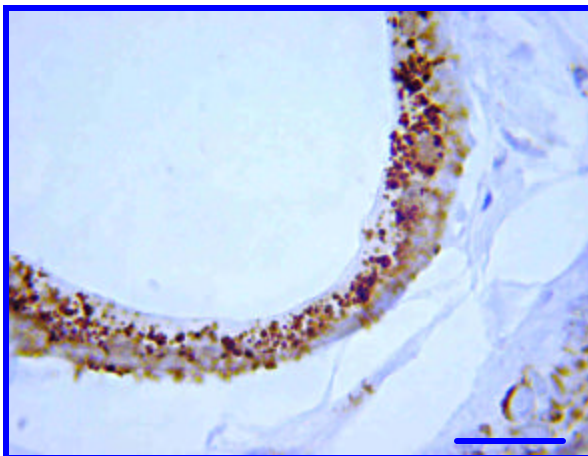


CHEMICON

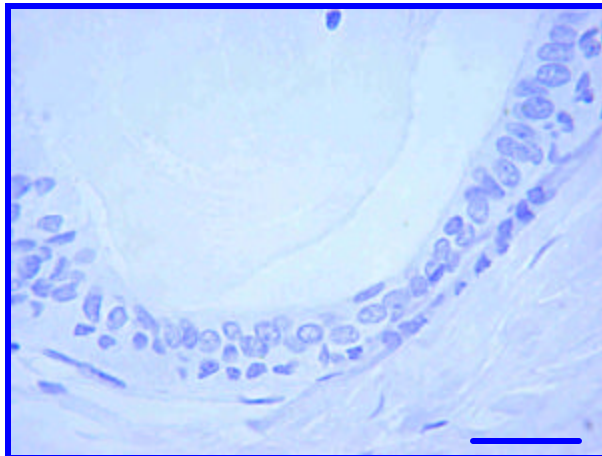
INTERNATIONAL

IHC – Paraffin Staining Examples:

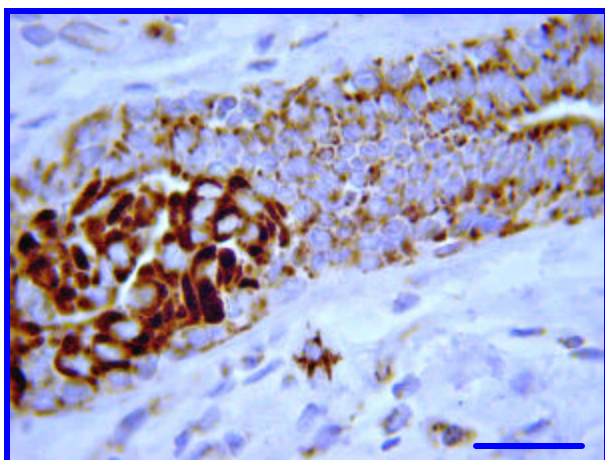
Pictures of Optimal Staining: Human Breast Carcinoma:



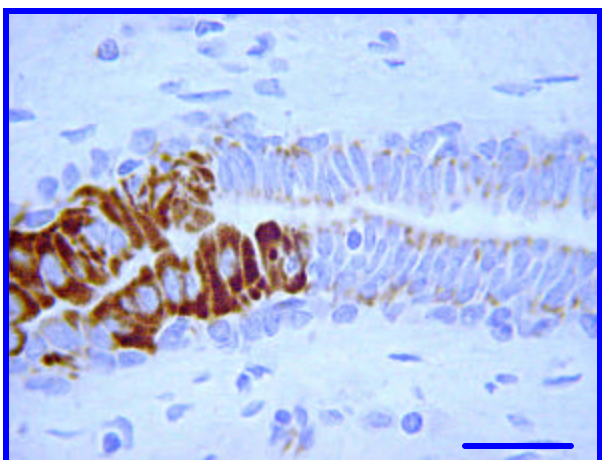
Rabbit anti-AIF (AB16501) staining of Human Breast Carcinoma. Tissue pretreated with EDTA Buffer, pH 8.0, anti-AIF at 5.0 μ g/ml, IHC-Select Detection with HRP-DAB. Ductal epithelial cells stain strongly (brown). Bar = 25 μ m.



Negative Control staining of Human Breast Carcinoma. Tissue pretreated with EDTA Buffer, pH 8.0, Negative Control Reagent IHC-Select Detection with HRP-DAB. No background staining is detected. Bar = 25 μ m.



Rabbit anti-AIF (AB16501) staining of Human Breast Carcinoma. Tissue pretreated with EDTA Buffer, pH 8.0, anti-AIF at 5.0 μ g/ml, IHC-Select Detection with HRP-DAB. Positive staining and endogenous background staining. Bar = 25 μ m.



Negative Control staining of Human Breast Carcinoma. Tissue pretreated with EDTA Buffer, Negative Control Reagent, IHC-Select Detection with HRP-DAB. Staining of endogenous background is detected. Bar = 25 μ m.

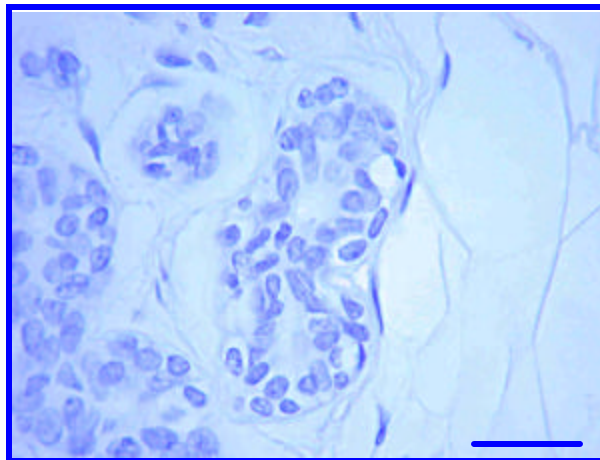
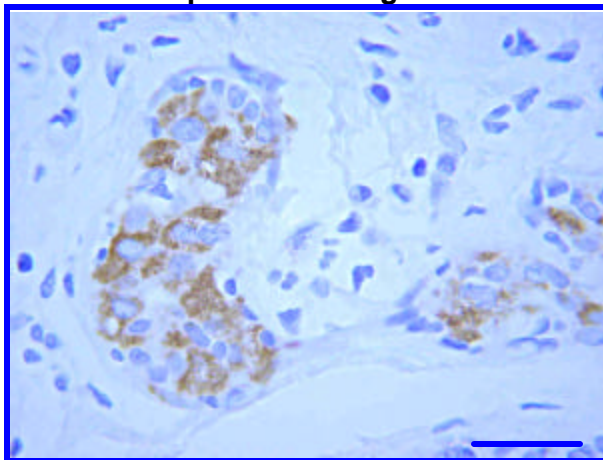


CHEMICON

INTERNATIONAL

IHC – Paraffin Staining Examples:

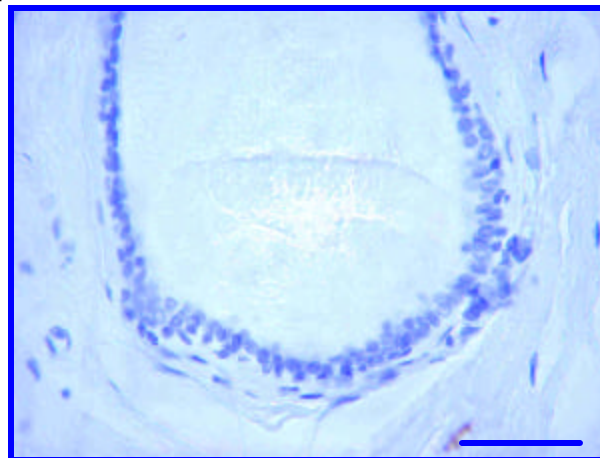
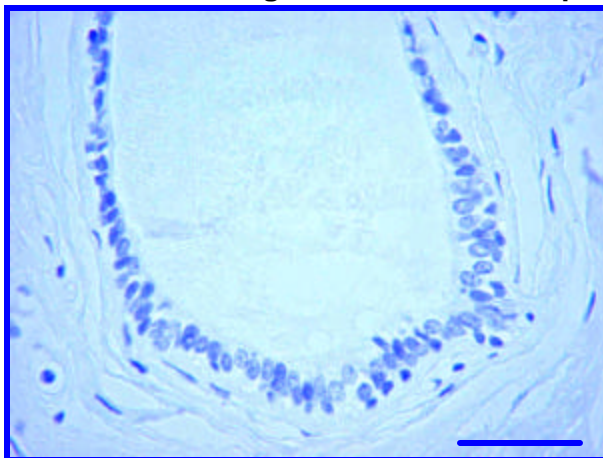
Pictures of Optimal Staining: Human Breast Carcinoma:



Rabbit anti-AIF (AB16501) staining of Human Breast Carcinoma. Tissue pretreated with TE pH 9.0, anti-AIF at 20 μ g/ml, IHC-Select Detection with HRP-DAB. Staining is light. Bar = 25 μ m.

Negative Control staining of Human Breast Carcinoma. Tissue pretreated with TE Buffer, pH 9.0, Negative Control Reagent IHC-Select Detection with HRP-DAB. No background staining is detected. Bar = 25 μ m.

Pictures of Staining in the Absence of Epitope Retrieval:



Rabbit anti-AIF (AB16501) staining of Human Breast Carcinoma tissue, without pretreatment (No HIER). Anti-AIF at 20 μ g/ml, IHC-Select Detection with HRP-DAB. No staining detected. Bar = 50 μ m.

Negative Control staining of Human Breast Carcinoma tissue, without pretreatment (No HIER). Negative Control Reagent, IHC-Select Detection with HRP-DAB. No staining detected. Bar = 50 μ m.