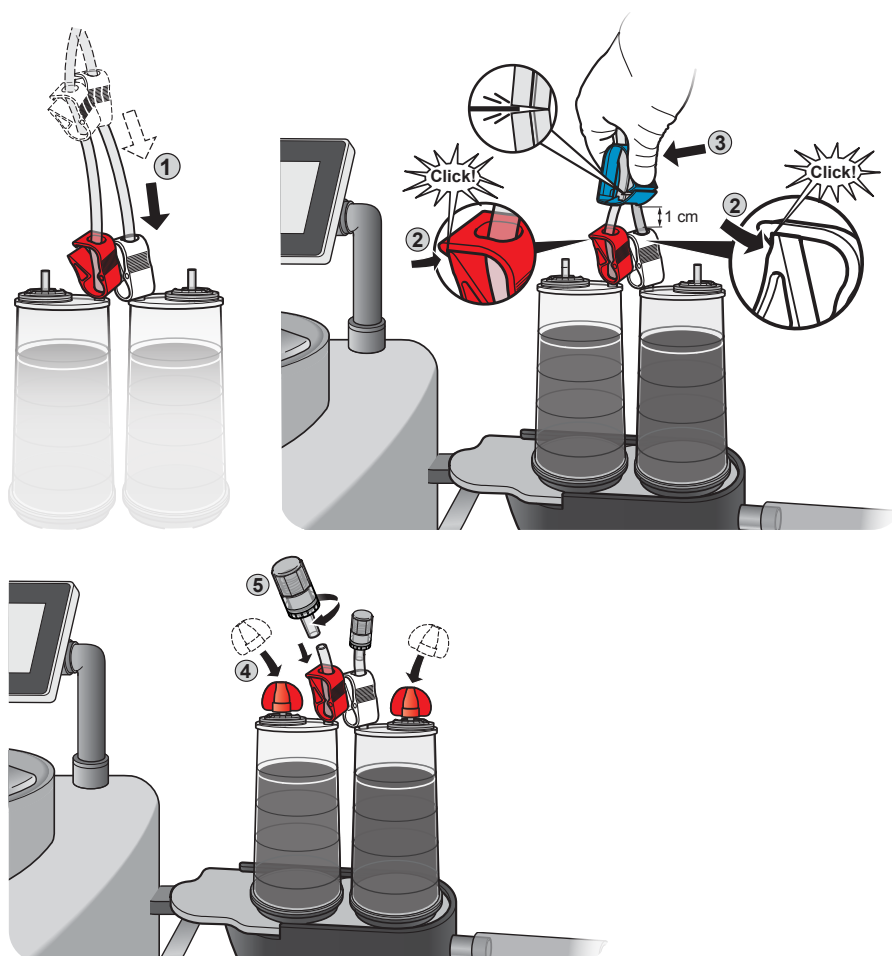


Quick Guide

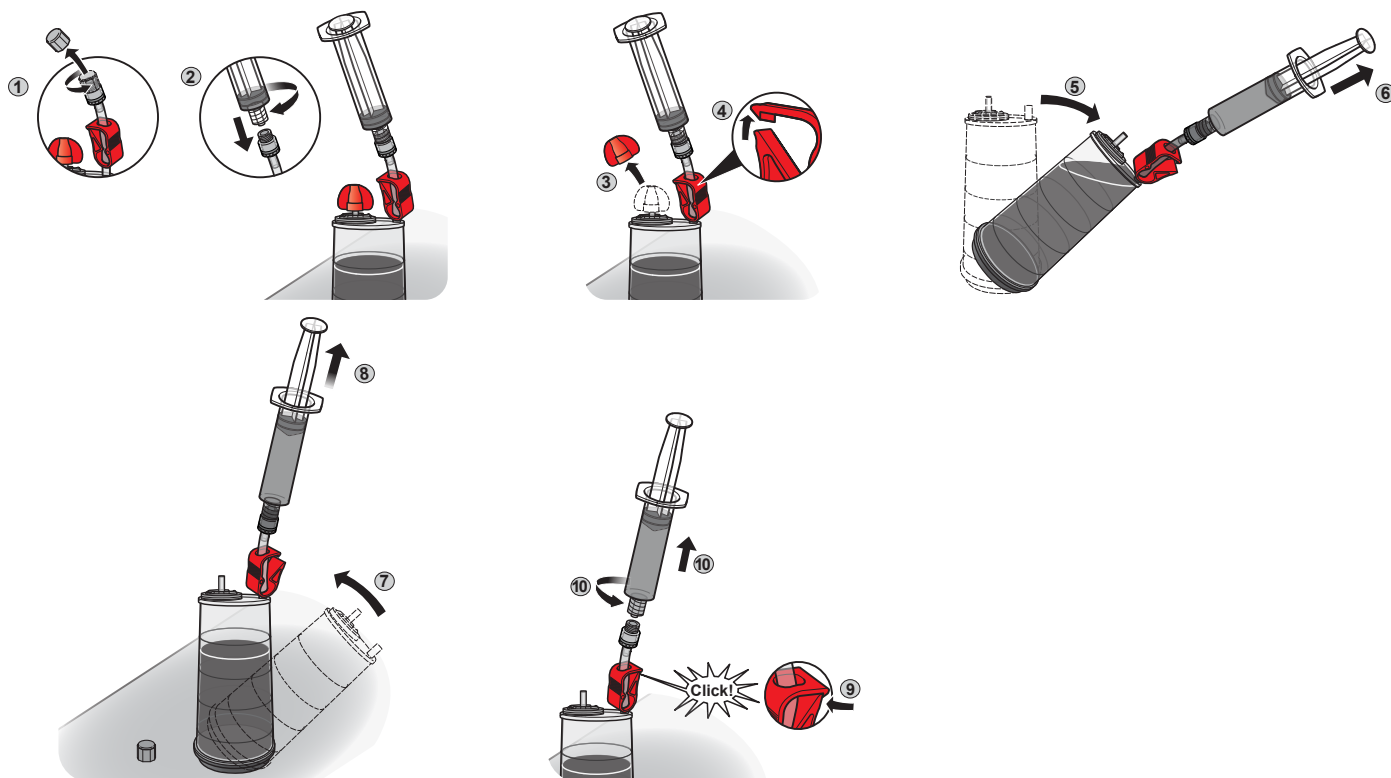
Steritest® Sampling Needle-Free Valve TZNFVSP20

Installing the Needle-Free Valve



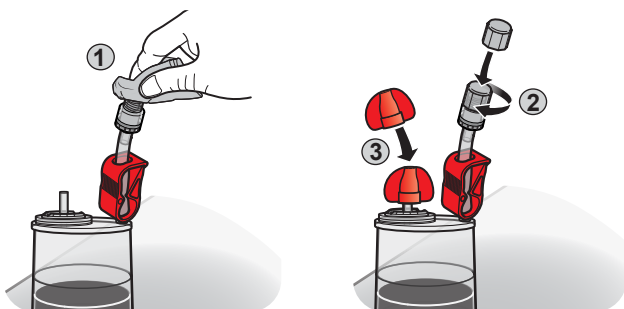
1. After completing the sterility test, move the red and white Steritest® device clamps down the tubing to the top of the canisters.
2. Close both clamps.
3. Cut the tubing using the blue Velax® cutting clamp, leaving approximately 1 cm of tubing above the red and white clamps.
4. Attach the red caps onto each canister's vent.
5. Firmly insert the Needle-Free Valve into the cut tubing with a gentle rotation.

Sampling from a canister after incubation



1. Remove the screw cap from the Needle-Free Valve.
2. Connect a sterile syringe (not included) with a male Luer connector to the Needle-Free Valve.
3. Remove the red caps from the canister's vent.
4. Open the tubing clamp.
5. Tilt the canister slightly until the media enters the chimney to the tubing and the needle-free valve.
6. Pull the syringe piston to sample the desired volume.
7. Place the canister back upright.
8. Keep pulling the piston, but only slightly, to remove the remaining liquid in the tubing and the Needle Free Valve.
9. Close the tubing clamp.
10. Remove the syringe and transfer the liquid to the desired container.

After sampling



1. Wipe off the septum surface of the Needle-Free Valve.
2. Screw the cap back onto the valve.
3. Place the red cap back onto the vent.

Technical Assistance

Please check the product webpage whether an update of this user guide is available. For more information visit www.SigmaAldrich.com/techservice

www.SigmaAldrich.com/sterility-testing

