



3050 Spruce Street
Saint Louis, Missouri 63103 USA
Telephone 800-325-5832 • (314) 771-5765
Fax (314) 286-7828
email: techserv@sial.com
sigma-aldrich.com

Product Information

Anti-Sortilin

produced in rabbit, affinity isolated antibody

Catalog Number **S0697**

Product Description

Anti-Sortilin (Neurotensin receptor 3) is produced in rabbit using as immunogen the peptide DKDTTRRIHVSTDQGD(C) corresponding to residues 320-335 of human Sortilin. The antibody is directed against a conserved epitope in the extracellular region of human sortilin. The antibody is affinity purified on immobilized antigen.

Anti-Sortilin recognizes human SORT1 (gene ID: 6272), rat Sort1 (gene ID: 83576 and mouse Sort1 (gene ID: 20661). The antibody has been used in immunoblotting and immunohistochemistry.

Sortilin is a member of the Vps10p family named for a yeast gene that is involved in trafficking between the trans-golgi network and the vacuole. In mammals sortilin has been shown to play an important role in golgi to endosome and golgi to lysosome trafficking. Sortilin is also known as neurotensin receptor 3 (NTS3), one of the receptors for the peptide neurotransmitter neurotensin that exerts several biological functions ranging from the regulation of dopamine transmission and pain in the central nervous system to its functioning as a local hormone affecting the gastrointestinal tract. In addition, sortilin has been lately identified as a co-receptor of p75^{NTR} for the binding of the proneurotrophins proNGF and proBDNF. Moreover, Sortilin expression was found to be essential for proNGF and proBDNF-induced neuronal cell death.

Sortilin protein is expressed in several tissues, most notably in brain, spinal chord, skeletal muscle and adipocytes.

Reagent

Supplied as a lyophilized powder from phosphate buffered saline, pH 7.4, containing 1% BSA and 0.025% sodium azide.

Reconstitution

Reconstitute the lyophilized powder with 50 µL or 200 µL deionized water, depending on package size. Further dilutions should be made using a carrier protein such as BSA (1-3%).

Precautions and Disclaimer

This product is for R&D use only, not for drug, household, or other uses. Please consult the Material Safety Data Sheet for information regarding hazards and safe handling practices.

Storage/Stability

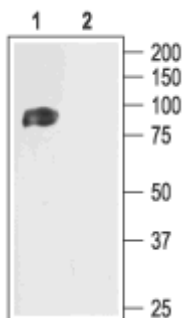
Lyophilized powder can be stored intact at room temperature for several weeks. For extended storage, it should be stored at -20 °C or below. The reconstituted solution can be stored at 2-8 °C for up to 2 weeks. For longer storage, freeze in working aliquots. Repeated freezing and thawing, or storage in "frost-free" freezers is not recommended. Centrifuge before use. Working dilution samples should be discarded if not used within 12 hours. The antibody is stable for at least 12 months when stored appropriately.

Product Profile

Immunoblotting: a recommended working dilution of 1:200 was determined using rat brain lysates

Immunohistochemistry: was performed with rat brain sections.

Note: In order to obtain best results in different techniques and preparations we recommend determining optimal working concentration by titration test.



Immunoblot of rat brain lysates

Lane 1 Anti-Sortilin antibody, 1:200.

Lane 2 Anti-Sortilin antibody, preincubated with the control peptide antigen

References

1. Petersen, C.M. *et al.*, *J. Biol. Chem.* **272**, 3599 . (1997).
2. Mazella, J. *et al.*, *J. Biol. Chem.* **273**, 26273 . (1998).
3. Nykjaer, A. *et al.* *Nature* **427**, 843 (2004).
4. Teng, H.K. *et al.*, *J. Neurosci.* **25**, 5455 (2005)

AH,PHC 04/07-1