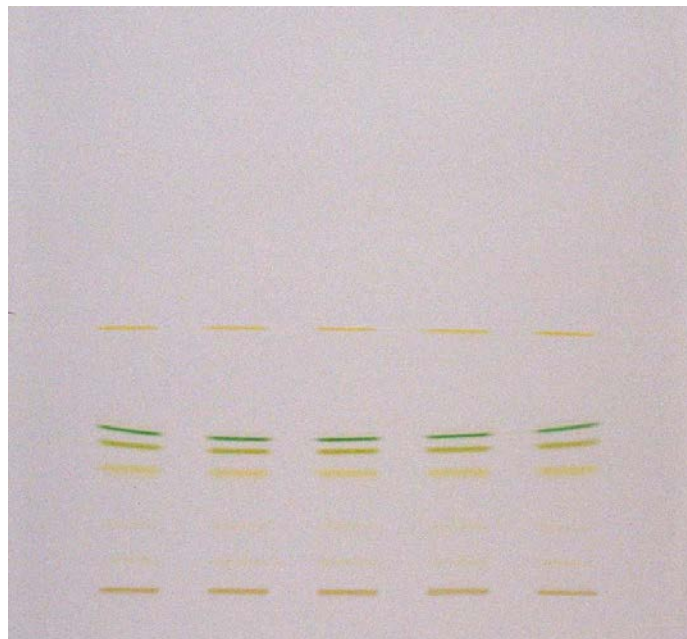


Separation of plant pigments

Plate	HPTLC Silica gel 60 F254, 10x10cm (P/N 1. 05628, alt P/N 1. 05642)
Mobile phase (v/v)	100ml petroleum ethe / 11ml isopropanol / 5 drops
Migration distance	5 cm
Application volume	2 μ L
Sample preparation	Milling leafs in a mortar with acetone
Chamber	Normal chamber without chamber saturation
Detection	Detection white light



Chromatographic data

No.	Compounds	Solvent
1 to 5 leafs	carotenes pheophytin chlorophyll a chlorophyll b lutein violaxanthin neoxanthin	acetone