

## Technical Data Sheet

# China-blue Lactose Agar

Ordering number: 1.02348.0500

Elective culture medium for differentiating between lactose-positive and lactose-negative microorganisms and for determination of the microbial count in milk (BRANDL and SOBECK-SKAL 1963).

### Mode of Action

This culture medium is free from inhibitors and contains lactose as a reactant. Degradation of lactose to acid is indicated by a colour change of the pH indicator, china blue, from colourless to blue.

### Typical Composition (g/L)

China-blue Lactose Agar	
Meat extract	3:0
Peptone from casein	5.0
Sodium chloride	5.0
Lactose	10.0
China blue	0.375
Agar-agar**	12.0

\*\*Agar-agar is equivalent to other different terms of agar.

### Preparation

Suspend 35.5 g/litre, autoclave (15 min at 121 °C).

pH: 7.2 ± 0.2 at 25 °C.

The plates are clear and pale blue.

## Experimental Procedure and Evaluation

Inoculate the culture medium by the streaking or pour-plate methods. The method employed depends on the purpose for which the medium is used.

Incubation: 24-48 hours at 35 °C aerobically.

Appearance of Colonies	Microorganisms
Blue	Lactose-positive: e.g. E. coli, coliform bacteria, staphylococci, streptococci and others
Colourless	Lactose-negative: e.g. Salmonella, Serratia, Proteus and others

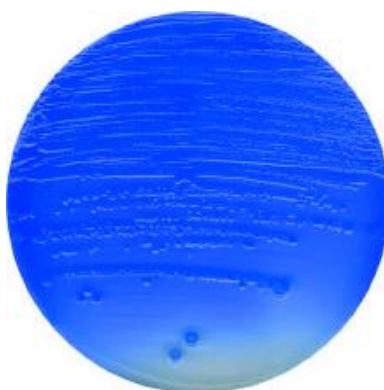
## Storage

Store at +15 °C to +25 °C, dry and tightly closed. Do not use clumped or discolored medium. Protect from UV light (including sun light). For *in vitro* use only.

## Quality Control

Control strains	Growth	Colour change to blue:
Escherichia coli ATCC 25922 (WDCM 00013)	good to very good	+
Proteus mirabilis ATCC 29906 (WDCM 00023)	good to very good	-
Pseudomonas aeruginosa ATCC 27853 (WDCM 00025)	good to very good	-
Enterococcus faecalis ATCC 11700	good to very good	conform
Streptococcus agalactiae ATCC 13813	good to very good	+
Staphylococcus epidermidis ATCC 12228 (WDCM 00036)	good to very good	+
Bacillus cereus ATCC 11778 (WDCM 00001)	good to very good	-

Please refer to the actual batch related Certificate of Analysis.



Escherichia coli ATCC 25922



We provide information and advice to our customers on application technologies and regulatory matters to the best of our knowledge and ability, but without obligation or liability. Existing laws and regulations are to be observed in all cases by our customers. This also applies in respect to any rights of third parties. Our information and advice do not relieve our customers of their own responsibility for checking the suitability of our products for the envisaged purpose.

Merck Millipore, the M logo, are registered trademarks of Merck KGaA, Darmstadt, Germany. ATCC is a registered trademark of ATCC, Manassas, VA, USA. Lit. No. TN4421EN00

## Literature

BRANDL, E., u. SOBECK-SKAL, E.; Zur Methodik der Keimzahlbestimmung in Milch mit Chinablau-Lactose agar. – Milchwiss. Ber., 13 (1963).

## Ordering Information

Product	Cat. No.	Pack size
China-blue Lactose Agar	1.02348.0500	500 g

Merck KGaA, 64271 Darmstadt, Germany  
Fax: +49 (0) 61 51 / 72-60 80  
mibio@merckgroup.com  
[www.merckmillipore.com/biomonitoring](http://www.merckmillipore.com/biomonitoring)

Find contact information for your country at:  
[www.merckmillipore.com/offices](http://www.merckmillipore.com/offices)  
For Technical Service, please visit:  
[www.merckmillipore.com/techservice](http://www.merckmillipore.com/techservice)



We provide information and advice to our customers on application technologies and regulatory matters to the best of our knowledge and ability, but without obligation or liability. Existing laws and regulations are to be observed in all cases by our customers. This also applies in respect to any rights of third parties. Our information and advice do not relieve our customers of their own responsibility for checking the suitability of our products for the envisaged purpose.

Merck Millipore, the M logo, are registered trademarks of Merck KGaA, Darmstadt, Germany. ATCC is a registered trademark of ATCC, Manassas, VA, USA. Lit. No. TN4421EN00