

RABBIT ANTI-THIOREDOXIN 1 POLYCLONAL ANTIBODY

CATALOG NUMBER: AB9328

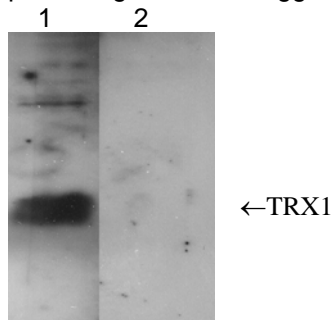
LOT NUMBER:

QUANTITY: 100 μ L

SPECIFICITY: Recognizes Thioredoxin 1 (TRX1).

IMMUNOGEN: Synthetic peptide from rat/mouse Thioredoxin 1.

APPLICATIONS: Immunoblotting: 1:1,000-1:5,000 using ECL. Reacts with the ~12-14 kD thioredoxin 1 protein. Additional bands >30 kD may be seen. Suggested dilution and blocking buffer is TBST containing 5% non-fat milk. Suggested gel percentage is 15%. Suggested incubation time is overnight.



Sample: PC12 cell lysate
Lane 1: AB9328 diluted 1:5,000
Lane 2: no primary antibody

Optimal working dilutions must be determined by the end user.

SPECIES REACTIVITIES: Rat and mouse. Other species have not been tested. It is expected that the antibody will also react with human due to sequence homology (14/15).

FORMAT: Rabbit serum.

PRESENTATION: Liquid. Contains no preservative.

STORAGE/HANDLING: Maintain at -20°C in undiluted aliquots for up to 6 months after date of receipt. Avoid repeated freeze/thaw cycles.



Important Note: *During shipment, small volumes of product will occasionally become entrapped in the seal of the product vial. For products with volumes of 200 μ L or less, we recommend gently tapping the vial on a hard surface or briefly centrifuging the vial in a tabletop centrifuge to dislodge any liquid in the container's cap.*

FOR RESEARCH USE ONLY; NOT FOR USE IN DIAGNOSTIC
PROCEDURES. NOT FOR HUMAN OR ANIMAL CONSUMPTION

Unless otherwise stated in our catalog or other company documentation accompanying the product(s), our products are intended for research use only and are not to be used for any other purpose, which includes but is not limited to, unauthorized commercial uses, in vitro diagnostic uses, ex vivo or in vivo therapeutic uses or any type of consumption or application to humans or animals.

©2002 - 2010: Millipore Corporation. All rights reserved. No part of these works may be reproduced in any form without permission in writing.

28820 Single Oak Drive • Temecula, CA 92590
Technical Support: T: 1-800-MILLIPORE (1-800-645-5476) • F: 1-800-437-7502
www.millipore.com