

## Product Information

### DNA Ladder, Supercoiled

11 Supercoiled fragments, 2–16 kb

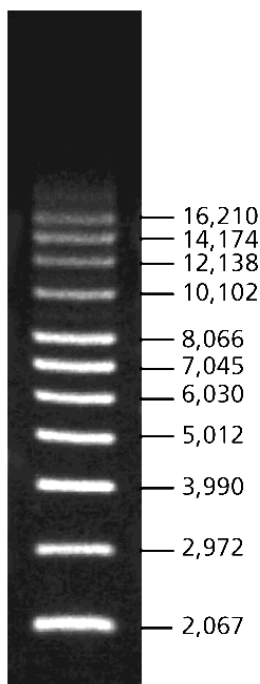
Catalog Number **D5292**

Storage Temperature –20 °C

### Product Description

The Supercoiled DNA Ladder contains 11 supercoiled fragments (2,067–16,210 bp) and is suitable for use as an electrophoresis marker for supercoiled DNA.

#### Plasmid Sizes base pairs (bp)



### Precautions and Disclaimer

This product is for R&D use only, not for drug, household, or other uses. Please consult the Material Safety Data Sheet for information regarding hazards and safe handling practices.

### Storage/Stability

The product is supplied in a solution containing 10 mM Tris-HCl, pH 8.0, and 1 mM EDTA. See Certificate of Analysis for lot specific concentration.

### Procedure

Mix an appropriate volume of the Supercoiled DNA Ladder with gel loading buffer (Product No. G2526) to the desired loading concentration. Typically 0.2 µg per well (0.02 µg/µl, 10 µl load) is sufficient to be seen using ethidium bromide staining. The recommended agarose gel concentration is 0.7% (Product No. A9539).

### Notes:

1. For best results load 10 times more supercoiled ladder than sample so that the ladder and sample stain at similar intensity.
2. Migration rates of supercoiled DNA plasmids vary greatly with agarose concentration, running buffer, and voltage.

AH,RS,PHC 08/10-1