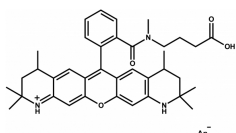


## 42424 Atto 550

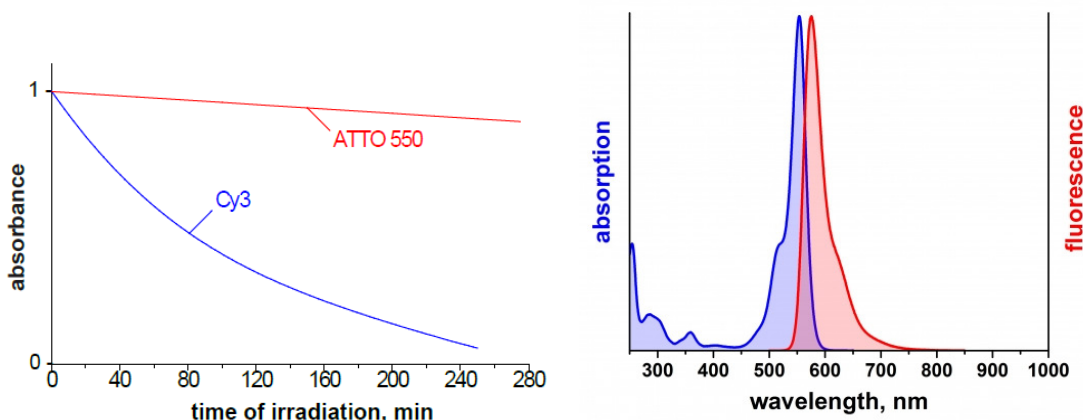
Atto 550 is a novel fluorescent label related to the well-known dye Rhodamine 6G. The dye is designed for application in the area of life science, e.g. labeling of DNA, RNA or proteins. Characteristic features of the label are strong absorption, high fluorescence quantum yield, high thermal and photo-stability, and very little triplet formation. The dye is highly suitable for single-molecule detection applications and high-resolution microscopy.

Atto 550 is a cationic dye (charge  $+1$ ). As supplied, Atto 550 consists of three isomers with identical absorption and fluorescence.

MW	694 g/mol
$\lambda_{\text{abs}}$	554 nm
$\epsilon_{\text{max}}$	$1.2 \times 10^5 \text{ M}^{-1} \text{ cm}^{-1}$
$\lambda_{\text{fl}}$	576 nm
$\eta_{\text{fl}}$	80 %
$\tau_{\text{fl}}$	3.6 ns
CF <sub>260</sub>	0.23
CF <sub>280</sub>	0.10



### Optical data of the carboxy derivative (in aqueous solution)



**Storage:** protected from light at  $-20^{\circ}\text{C}$

### Precautions and Disclaimer

This product is for R&D use only, not for drug, household, or other uses. Please consult the Material Safety Data Sheet for information regarding hazards and safe handling practices.

The vibrant M and Sigma-Aldrich are trademarks of Merck KGaA, Darmstadt, Germany or its affiliates.

Detailed information on trademarks is available via publicly accessible resources.

© 2018 Merck KGaA, Darmstadt, Germany and/or its affiliates. All Rights Reserved.

The life science business of Merck KGaA, Darmstadt, Germany operates as MilliporeSigma in the US and Canada.

