



## EZ-Fluo™ Rapid Detection System

A fast, non-destructive, fluorescent staining-based system for microbial detection

- Rapid technology capable of providing results in 1/3 of the time required using traditional techniques
- Flexible approach based on standard membrane filtration and reduced incubation on media plate
- Non-destructive method, compatible with any ID technique
- Compact hardware, fits easily on any laboratory bench
- Cost effective solution for both routine and investigatory use



### Easy to integrate into any laboratory

Our EZ-Fluo™ Rapid Detection System enables you to significantly reduce your time to result, address contamination events sooner, and therefore, gain better control of your microorganisms process.

The EZ-Fluo™ System is a rapid florescent-based technology designed for fast quantitative detection of microorganisms over a broad range of filterable samples. This new system uses standard membrane filtration to detect viable and culturable microorganisms down to 1 CFU per sample. EZ-Fluo™ test results are easily comparable to compendial method test results, which facilitates the validation and the integration of this rapid system in any laboratory without causing disruption. Detected microbial contamination can be then identified using your current ID methodology.

### Faster product release

Today, more and more QC laboratories are switching to rapid methods for the detection of microbial contamination. This is because traditional methods require several days to provide results and therefore are of limited value when it comes to releasing product to the market faster, or to conducting quick investigations when necessary.

## Simple protocol using regular membrane filtration and incubation

The EZ-Fluo™ Rapid Detection System consists of a reader and staining reagents used in combination with regular 47 mm filtration membranes and standard media. Optimal results can be obtained using our membranes and comprehensive media portfolio. The use of the camera (optional) offers traceability of results and comfort when reading.

### 1. Sample preparation

Filtration using EZ-Fit® Filtration Unit and media plates: Simply filter your sample the same way you prepare your current samples and incubate the membrane on your regular media type.



For a perfect contact of the membrane to the agar use our ReadyPlate™ 55 agar plates



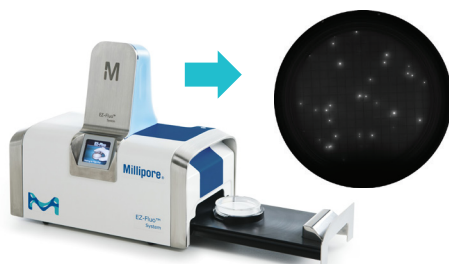
### 2. Fluorescent staining

Transfer membrane to a Petri-Pad Petri dish wetted with staining reagent and incubate for 30 minutes.



### 3. Counting CFUs

Count fluorescent colonies through the window of the EZ-Fluo™ Reader or use the camera (optional) to view the colonies on your computer screen.



## Applications

The EZ-Fluo™ system can detect and quantify microbial contamination in any filterable sample. Potential applications are numerous and include testing of the following sample types:

- Raw materials
- In-process samples
- Final product
- Environmental samples

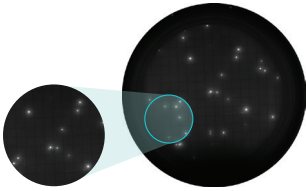


## Reincubation for microorganism identification

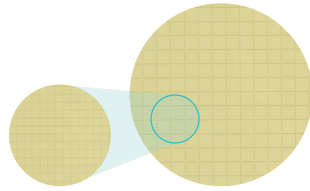
The EZ-Fluo™ System is a non-destructive method that enables you to continue to grow the microorganisms after they have been stained, in order to identify them using any standard ID technology. This is a tremendous advantage compared to other rapid test systems that do not allow ID of microorganisms.

### Reincubation step

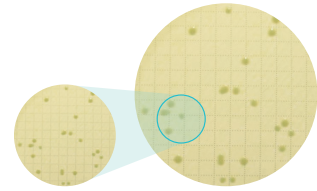
Place membrane on a prefilled agar media cassette and reincubate. Collect and isolate the microorganisms and identify using any existing ID methodology.



Visualize plate after staining. View of membrane in the reader.



Colonies are not visible outside the reader.



After reincubation, colonies are visible to the eye.

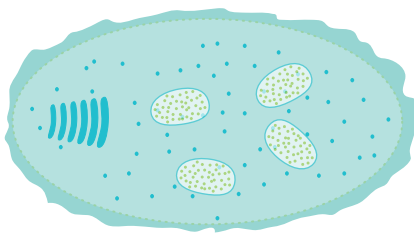
**Example:** Tested sample of in-process, non-sterile water using the EZ-Fluo™ system. After detection, membrane was re-incubated for full growth and identification.

## Non-destructive technology

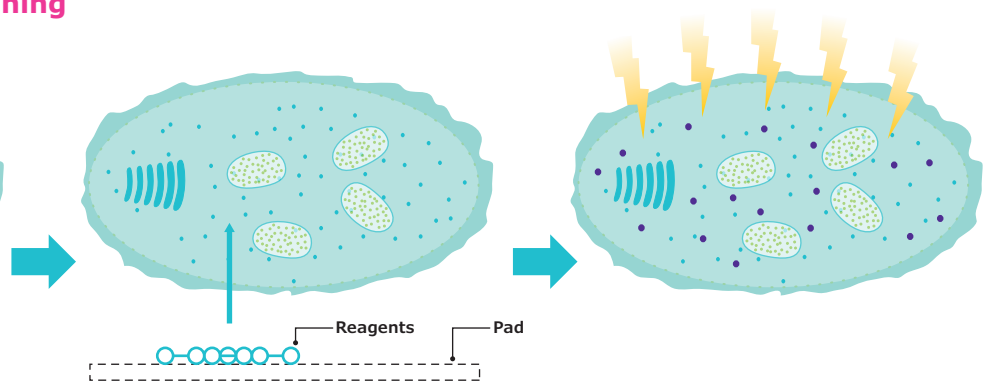
The EZ-Fluo™ method is based on a unique, non-destructive, fluorescent marker. After filtration and incubation, the staining reagent is applied, and any viable and culturable microorganisms are stained. The reagent is initially non-fluorescent, but an intracellular enzyme that is active only as part of the metabolic processes of living cells, cleaves the substrate to liberate the fluorophore.

As fluorophore accumulates inside the cells, the signal is naturally amplified. In the EZ-Fluo™ reader, the cells are exposed to the excitation wavelength of the fluorescent dye so that they can be visually counted. The fluorescence allows much smaller colonies to be seen than are visible by the naked eye.

### Principle of fluorescent staining



Bacterium before staining



Membrane incubation on the staining pad (30 minute incubation)

Stained bacterium

## Specifications

Table Head	Table	Table	
Dimensions (nominal)	Length	24.9 cm (9.8 in.)	9.7 cm (3.8 in.)
	Width	14.2 cm (5.6 in.)	6.6 cm (2.6 in.)
	Height	12.5 cm (4.9 in.)	11.4 cm (4.5 in.)
Weight (nominal)		4.4 kg (9.7 lbs.)	0.5 kg (1.1 lb.)
Supply Voltage	Input	100 V – 240 V 50 Hz – 60 Hz	
	Output	24 V direct current	
Power Consumption	Nominal	670 mA	200 mA
	Maximal	2080 mA	430 mA
Power*	Nominal	16 watts	1 watt
	Maximal	50 watts	2.15 watts
Environmental Operating Temperature	15 to 40 °C (59 to 104 °F)		
Humidity	< 90%		
Altitude	< 3,000 m (9,842 ft.)		

**Regulatory Information** We certify that the EZ-Fluo™ Reader and the EZ-Fluo™ Camera were designed and manufactured in application of the following European Council directives:

- 1 Electromagnetic compatibility 2004/108/EC
- 2 Restriction of the use of certain Hazardous Substances in electrical equipment (RoHS) 2002/95/EC

### Materials of Construction

Housing	Painted aluminum sheet 1050
Optical chamber	304L stainless steel
Handle	304L stainless steel
Optical filter	Glass
LED protector	Transparent polycarbonate
Foot	Polyvinylchloride (PVC)
Labels	Polyester
Screen	Protector polyester
Front plate	<b>304L stainless steel</b>
Housing	<b>Painted aluminum alloy</b>
Window	<b>Glass</b>
Light guard	<b>Clear polymethyl methacrylate (PMMA)</b>

\*The reader is supplied with its power cord according to region.

## Support and services

We provide a comprehensive range of support and services to help you save your QC resources and facilitate the implementation of your EZ-Fluo™ system into your daily testing routine. Our highly experienced service teams can assist you with the **following activities**:

- Feasibility study and on-site evaluation
- Method development and method development consulting
- Equipment installation
- Operator training
- On-site system qualification (IQ/OQ)
- Yearly preventive maintenance
- Service plan

For further information on our support and services offering, please contact your local sales representative.

## Ordering Information

Product Description	Qty./Pk	Cat. No.
<b>EZ-Fluo™ System Kits</b>		
EZ-Fluo™ System standard kit, including 1 reader, 1 camera and installation files on USB key	1	EZFKIT001WW*
<b>EZ-Fluo™ Hardware</b>		
EZ-Fluo™ reader	1	EZFREAD01WW*
EZ-Fluo™ camera	1	EZFCAM001
<b>Consumables</b>		
EZ-Fluo™ Reagent Kit	57 tests	EZFREAG57
EZ-Pak® Filters 0.45 µm 47 mm black gridded	600	MSP000814
EZ-Pak® Filters 0.45 µm 47 mm white gridded	600	EZHAWG474
S-Pak® Filters 0.45 µm 47 mm black gridded	600	HABG047S6
S-Pak® Filters 0.45 µm 47 mm white gridded	600	HAWG047S6
Petri-Pad™ Petri dish, sterile, 47 mm	150	PD20047S0
Petri-Pad™ Petri dish, sterile, 47 mm	600	PD20047S5
<b>EZ-Fluo™ Accessories</b>		
EZ-Pak® Membrane Dispenser	1	EZDISP001
EZ-Pak® Dispenser Curve	1	EZCURVE01
EZ-Pak® Dispenser Curve (AC only)	1	EZCURVEAC
EZ-Stream® Pump	1	EZSTREAM1
Silicone Hose for EZ-Stream® Pump Autoclavable Internal diameter: 9.5 mm (3/8 in.) Length: 5.0 m (196.8 in.)	1	STREAMTUB
PVC Hose for EZ-Stream® Pump Not autoclavable Not autoclavable Internal diameter: 9.5 mm (3/8 in.) Length: 3.0 m (118.1 in.)	1	XX6700034
Filter forceps	3	XX6200006P

\*Country code to be defined at ordering step.

EZ-Fit® Filtration Units PINK base	Qty./Pk	Packaging Format	Cat. No.
EZ-Fit® filtration unit, white plain PVDF membrane, 0.45 µm, 100 mL	48	Single	EFHVW10IS
EZ-Fit® filtration unit, white gridded MCE membrane, 0.45 µm, 100 mL	48	Multipack of 3 units	EFHAW10MS
EZ-Fit® filtration unit, white gridded MCE membrane, 0.45 µm, 250 mL	48	Bulk with protective bag	EFHAW25BS
EZ-Fit® filtration unit, black gridded MCE membrane, 0.45 µm, 100 mL	48	Multipack of 3 units	EFHAB10MS
EZ-Fit® filtration unit, black gridded MCE membrane, 0.45 µm, 250 mL	48	Bulk with protective bag	EFHAB25BS
EZ-Fit® filtration unit, white gridded MCE membrane, 0.22 µm, 100 mL	48	Multipack of 3 units	EFGSW10MS
EZ-Fit® filtration unit, white gridded MCE membrane, 0.22 µm, 100 mL	48	Single	EFGSW10IS
EZ-Fit® filtration unit, white gridded MCE membrane, 0.8 µm, 100 mL	48	Bulk with protective bag	EFAAW10BS
EZ-Fit® filtration unit, black gridded MCE membrane, 0.8 µm, 250 mL	48	Bulk with protective bag	EFAAB25BS
EZ-Fit® filtration unit, white gridded MCE membrane, 0.22µm, 250 mL	48	Single	EFGSW25IS
EZ-Fit® filtration unit, white gridded MCE membrane, 0.45µm, 100 mL	48	Bulk with protective bag	EFHAW10BS
EZ-Fit® filtration unit, black gridded MCE membrane, 0.45 µm, 100 mL	48	Bulk with protective bag	EFHAB10BS
EZ-Fit® filtration unit, white gridded MCE membrane, 0.45 µm, 100 mL	48	Single	EFHAW10IS

The pink EZ-Fit® Filtration Units come without pad.

BLUE base – with pad	Qty./Pk	Packaging Format	Cat. No.
EZ-Fit® filtration unit, white gridded MCE membrane, 0.45 µm, 100 mL 48	48	Bulk with protective bag	EFHAW100B
EZ-Fit® filtration unit, white gridded MCE membrane, 0.45 µm, 100 mL 48	48	Single	EFHAW100I
EZ-Fit® filtration unit, white gridded MCE membrane, 0.45 µm, 250 mL 48	48	Bulk with protective bag	EFHAW250B
EZ-Fit® filtration unit, white gridded MCE membrane, 0.45 µm, 250 mL 48	48	Single	EFHAW250I
EZ-Fit® filtration unit, black gridded MCE membrane, 0.45 µm, 100 mL 48	48	Bulk with protective bag	EFHAB100B
EZ-Fit® filtration unit, black gridded MCE membrane, 0.45 µm, 100 mL 48	48	Single	EFHAB100I
EZ-Fit® filtration unit, black gridded MCE membrane, 0.45 µm, 250 mL 48	48	Single	EFHAB250I
EZ-Fit® filtration unit, white gridded MCE membrane, 0.45 µm, 100 mL 48	48	Multipack of 3 units	EFHAW100M3
EZ-Fit® filtration unit, black gridded MCE membrane, 0.45 µm, 100 mL 48	48	Multipack of 3 units	EFHAB100M3
EZ-Fit® filtration unit, white gridded MCE membrane, 0.45 µm, 100 mL, with plug	48	Single	EFHAW100IP

The blue EZ-Fit® filtration units come with pad.

## The EZ-Fluo™ rapid detection system and accessories



[SigmaAldrich.com/EZ-Fluo](https://SigmaAldrich.com/EZ-Fluo)

### To place an order or receive technical assistance

In Europe, please call Customer Service:

France: 0825 045 645

Germany: 069 86798021

Italy: 848 845 645

Spain: 901 516 645 Option 1

Switzerland: 0848 645 645

United Kingdom: 0870 900 4645

For other countries across Europe,  
please call: +44 (0) 115 943 0840

Or visit: [SigmaAldrich.com/offices](https://SigmaAldrich.com/offices)

For Technical Service visit:  
[SigmaAldrich.com/techservice](https://SigmaAldrich.com/techservice)

[SigmaAldrich.com](https://SigmaAldrich.com)

Merck KGaA  
Frankfurter Strasse 250  
64293 Darmstadt, Germany

