

ChetoSensor™ Technology: Consider it DisSolved

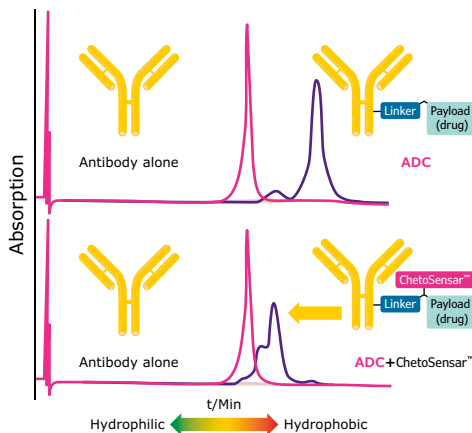
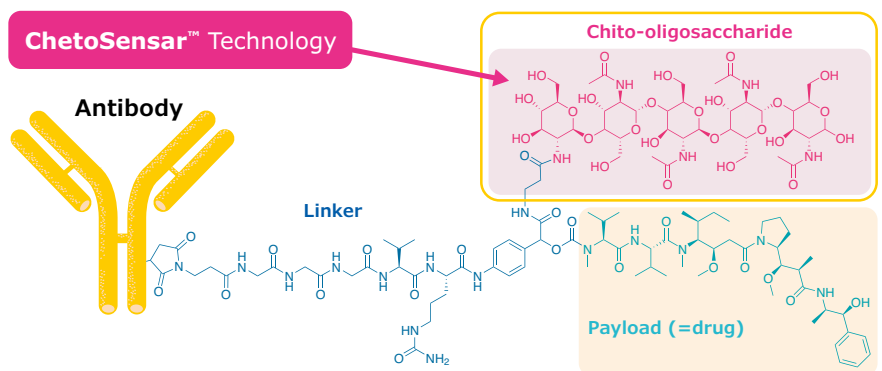
A technology that solves many challenges with antibody-drug conjugates



Rescue your ADC Program:

Do you need to rescue your ADC program? Poor solubility of ADCs represents a significant challenge leading to painstaking efforts to rescue these programs. Our ChetoSensor™ Technology can help to improve the solubility of ADCs and provides access to highly hydrophobic novel payloads that might not be considered. Find out how you can try this technology to improve solubility, reduce aggregation, improve therapeutic index & conjugation efficiency, and achieve higher drug-to-antibody ratio for your ADC program.

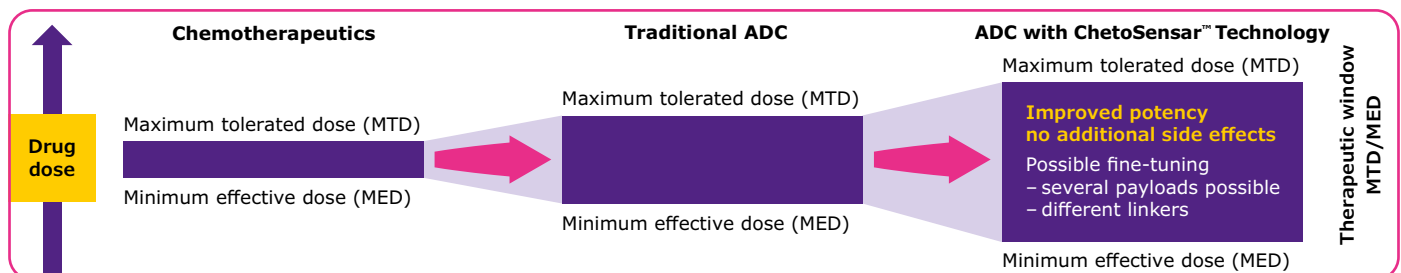
What is ChetoSensor™ Technology?



How can ChetoSensor™ Technology be used?

- Works with broad range of linkers/payloads
- Provides flexibility with the linkage site and conjugation technologies
- Works with non-traditional antibodies which would not be considered otherwise
- Can be accessed as a non-exclusive licensing option
- You can benefit from comprehensive services from discovery to commercialization of your ADC

ChetoSensor™ Technology broadens the therapeutic window



* Increased solubility and superior performance for Interchain Maleimide Cat B- MMAE ADC with ChetoSensor™ Technology was seen in in vivo studies.

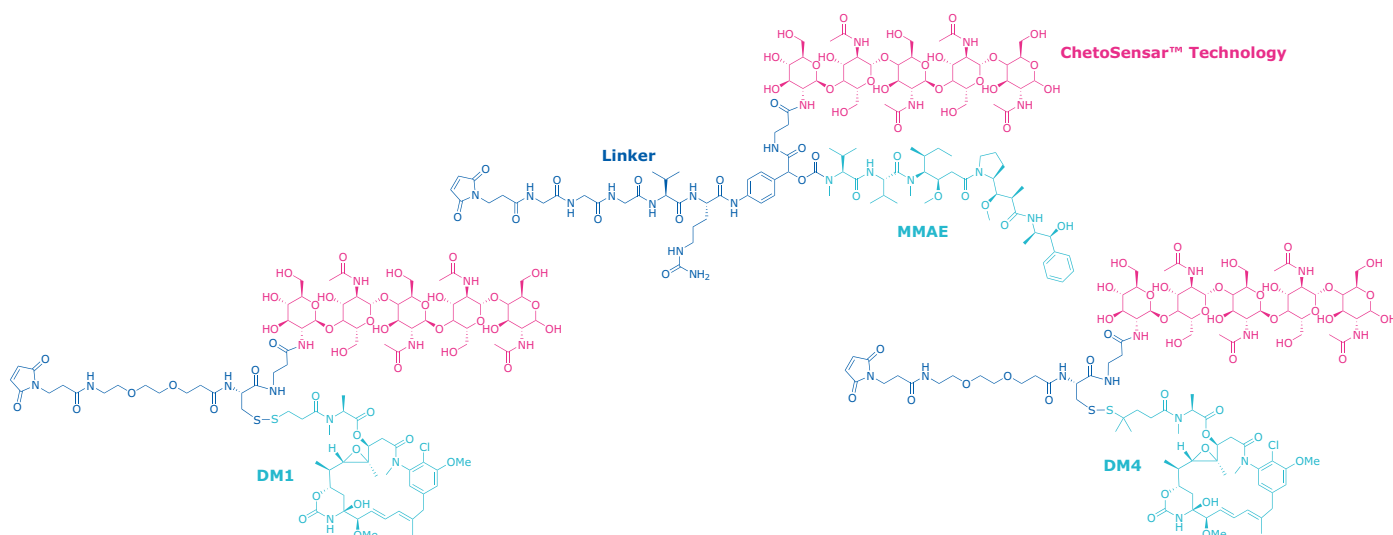
Comprehensive Solutions for Your ADC

We offer comprehensive supply chain reliability from discovery to commercialization of your ADC.

This includes coordinated and collaborative services for the development, manufacturing, and testing of bulk drug substance and drug product. We offer a full range of services to support your ADC projects:

- Linker, payload, conjugation development, and manufacturing services
- Analytical method development and validation
- Technology transfer and manufacturing
- Stability studies for bulk drug substance and drug product
- Regulatory support

To simplify evaluation with your bioconjugates, ChetoSensor™ Technology has been incorporated into popular linker-payloads for immediate use in our ADC Express™ Services.



ADC Express™ Services

Discovery Conjugation Services for the Best Candidate Selection

- Mini-prep scale: 10–20 mg ADC construct +/- column purification
- Medium-prep scale: up to 100 mg ADC +/- column purification
- Certificate of testing with key quality attributes
 - ADC concentration
 - Payload density/DAR (drug-to-antibody ratio)
 - Monomer/aggregate content
 - Endotoxin

Learn more:

[SigmaAldrich.com/services/contract-manufacturing/adc-bioconjugation](https://sigmaaldrich.com/services/contract-manufacturing/adc-bioconjugation)

To place an order or receive technical assistance, please visit [SigmaAldrich.com/services/contact-safc](https://sigmaaldrich.com/services/contact-safc)

Related Products and Services:

- DM1
- ADC Express™ Services
- DOLCore™
- MAYCore™
- PBDCore™

Merck KGaA
Frankfurter Strasse 250
64293 Darmstadt, Germany

www.sigmaaldrich.com

