



Secure, Reliable, Convenient: ICR/ICRplus Contact and Settle Plates

Designed to meet the highest requirements of microbial monitoring in sterile production environments

We offer a broad range of ready-to-use culture media to detect a wide range of microorganisms.

Supplementation of the media with neutralizers like lecithin, polysorbate 80, histidine and sodium thiosulfate facilitates the growth of organisms in the presence of anti-microbial components.

Secure and reliable:

- Data matrix barcode on each plate ensures data integrity
- H₂O₂-impermeable triple-sleeve packaging for use in clean rooms and isolators
- Produced in clean rooms and gamma-irradiated to minimize the risk of cross contamination
- Lockable plates (ICRplus) available for safe transportation

Convenient:

- Room temperature storage so can be kept at site of use
- Long shelf life (up to 12 months) for less growth promotion tests, saving time and lab cost
 - SDA culture media in pink plates to distinguish easily between TSA and SDA media formulation
 - Supplemented with neutralizers to inactivate a broad range of disinfectants and β -lactam antibiotics
- New media formulation with raw material of non-animal origin to minimize the risk of BSE contamination

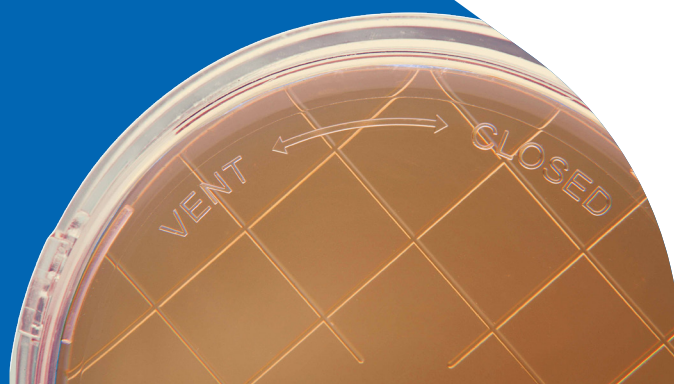
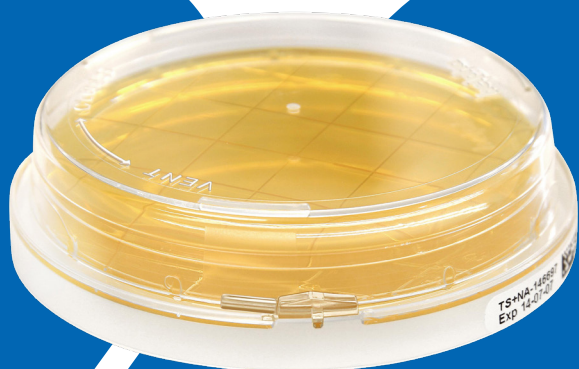


Certificates of Analysis will contain additional outstanding and helpful information:

- Functionality test of data matrix code
- Verification of anaerobic growth of lockable plates (*Clostridium sporogenes*)
- Disinfectant neutralization test as part of batch release testing

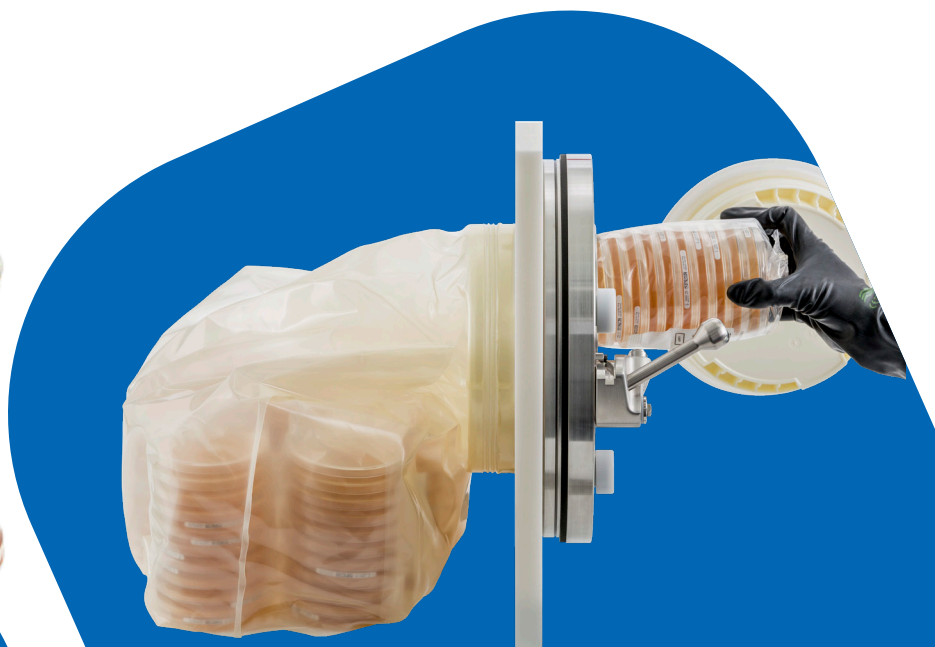
Ready to use culture media for surface and personnel monitoring: Contact plates

Article #	Plate type	Description	Units/ package size	Medium	Shelf life (days)
Tryptic soy agar (TSA) for surface and personnel monitoring					
146552	Lockable contact plate	Tr.Soy Cont.A + LT-ICR+	20/200	TSA	270
146195	Non-lockable contact plate	Tr. Soy Cont. A. w. LT-ICR 2284e	20/200	TSA	270
146783	Lockable contact plate	TSA w. LTHThio cont.-ICR+	20/200	TSA	360
146797	Non-lockable contact plate	TSA w. LTHThio cont.-ICR	20/200	TSA	360
146697	Lockable contact plate	Neutralizer A - Contact-ICR+	20/200	TSA	180
146798	Lockable contact plate	TSA w. Pen. LTHThio cont. ICR+	20/200	TSA	180
146539	Lockable contact plate	TS-Cont. +LT +Cephase-ICR+ 823	200	TSA	180
Sabouraud dextrose agar (SDA) for surface and personnel monitoring					
146201	Non-lockable contact plate	SDA Contact w. LTHTh - ICR 25130e	20/200	SDA	180
146501	Lockable contact plate	Sab-Gluc-Cont. A +LTHTh-ICR+ 850	20/200	SDA	180
146538	Lockable contact plate	SDA Contact +LTHTh sel-ICR+ 851	20/200	SDA	180
Vegetable peptone agar for surface and personnel monitoring					
146803 New	Lockable contact plate	Veg. Pept.Agar w. LTHThio cont.-ICR+	20/200	VPA	360
Chocolate agar for surface and personnel monitoring					
146555	Lockable contact plate	Chocolate Cont.A.+LTH- ICR+	20		180
Swab for surface and personnel monitoring					
1465290100	Swab	ICR-Swab 60515 (qualitative test)	100	TSB	230
IsoBag™ for loading contact plates into isolators through a 190 mm alpha port					
1467530100	Lockable contact plate (146783)	IsoBag™ TSA LTHThio contact ICR+	100	TSA	360
1467850100	Non-lockable contact plate (146231)	IsoBag™ TSA LTHTh contact ICR	100	TSA	270
1467840100	Non-lockable contact plate (146195)	IsoBag™ TSA LT contact ICR	100	TSA	270
1468170100	Lockable contact plate (146552)	IsoBag™ TSA LT contact ICR+	100	TSA	270
Accessories					
146502	Stainless steel	Rack for contact plates 63140-1p	1		-
146509	Zip-lock PE bags	Transp. bags (25x5), sterile 60050	125		720
146530	Stainless steel	Swab rack 63142-1p	1		-



Ready to use culture media for active and passive air monitoring as well as personnel monitoring:
Settle plates (all settle plates are filled with 30 mL media)

Article #	Plate type	Description	Units/ package size	Medium	Shelf life (days)
Tryptic soy agar (TSA) for active and passive air monitoring					
146001	Non-Lockable settle plate	Tryptic Soy Agar-ICR 30 mL	20/120	TSA	270
146050	Non-lockable settle plate	TSAw. LT-ICR 30 mL	20/120	TSA	270
146786	Non-lockable settle plate	TSAw. LTHThio sedi.-ICR	20/120	TSA	360
146787	Lockable settle plate	TSAw. LTHThio sedi.-ICR+	20/120	TSA	360
146076	Non-lockable settle plate	TSA+LT+Cephase-ICR	20/120	TSA	180
146799	Non-Lockable settle plate	TSAw.Pen.LTHThio sedi.ICR	20/120	TSA	180
146800	Lockable settle plate	TSAw. Pen.LTHThio sedi.ICR+	20/120	TSA	180
146684	Lockable settle plate	TSA LT 90mm ICR+	20/120	TSA	270
146685	Lockable settle plate	TSA 90mm ICR+	20/120	TSA	270
Sabouraud dextrose agar (SDA) for active and passive air monitoring					
146005	Non-lockable settle plate	SDA w. LTHTh - ICR 30 mL	20/120	SDA	180
146016	Non-lockable settle plate	Sab.Dex.A sel. +LTHTh - ICR	120	SDA	180
146081	Non-lockable settle plate	Sab-Dextr-A. w. LT - ICR 30mL	120	SDA	180
146577	Non-lockable settle plate	Sab. Dextr. Agar - ICR 30mL	20/120	SDA	180
146702	Lockable settle plate	SDA +LTHTh-ICR+ 90 mm	20/120	SDA	180
146703	Lockable Settle plate	SDA +LT-ICR+ 90 mm	20/120	SDA	180
Vegetable peptone agar for active and passive air monitoring					
146804	New Lockable settle plate	Veg.Pept.Agar w. LTHThio sedi.-ICR+	20/120	VPA	360
IsoBag™ for loading settle plates into isolators through a 190 mm alpha port					
146755	Lockable settle plate (146683)	IsoBag™ TSA+LTHTh Settle +	80	TSA	270
146756	Non-lockable settle plate (146069)	IsoBag™ TSA+LTHTh Settle	80	TSA	270
146785	Lockable settle plate (146684)	IsoBag™ TSA+LT Settle+	80	TSA	270
146814	Non-lockable settle plate (146001)	IsoBag™ TSA Settle	80	TSA	270
Accessories					
146529	Zip lock PE bags	Zip-lock PE bags	Transp. Bags (25x5), sterile 60050	125	720
146519	Stainless steel	Stainless steel	Rack for sedimentation plates 63141	1	-





For more information about our contact plates and settle plates please visit our webpages:



SigmaAldrich.com/contact-plates



SigmaAldrich.com/settle-plates

To place an order or receive technical assistance

Order/Customer Service: SigmaAldrich.com/order
Technical Service: SigmaAldrich.com/techservice
Safety-related Information: SigmaAldrich.com/safetycenter

SigmaAldrich.com

Merck KGaA
Frankfurter Strasse 250
64293 Darmstadt, Germany

