

Application Report 10

Industrial Solvents on Equity-1701

The Equity-1701 offers an intermediate polarity alternative to the standard nonpolar methylsilicone and polar Carbowax 20M columns often used to analyze industrial solvents. In this application we analyzed a mix of 59 commonly used industrial solvents. This column offered excellent peak shape and response for all 59 analytes and would be an excellent counterpart to either an Equity-1 or SUPELCOWAX 10 for this application.

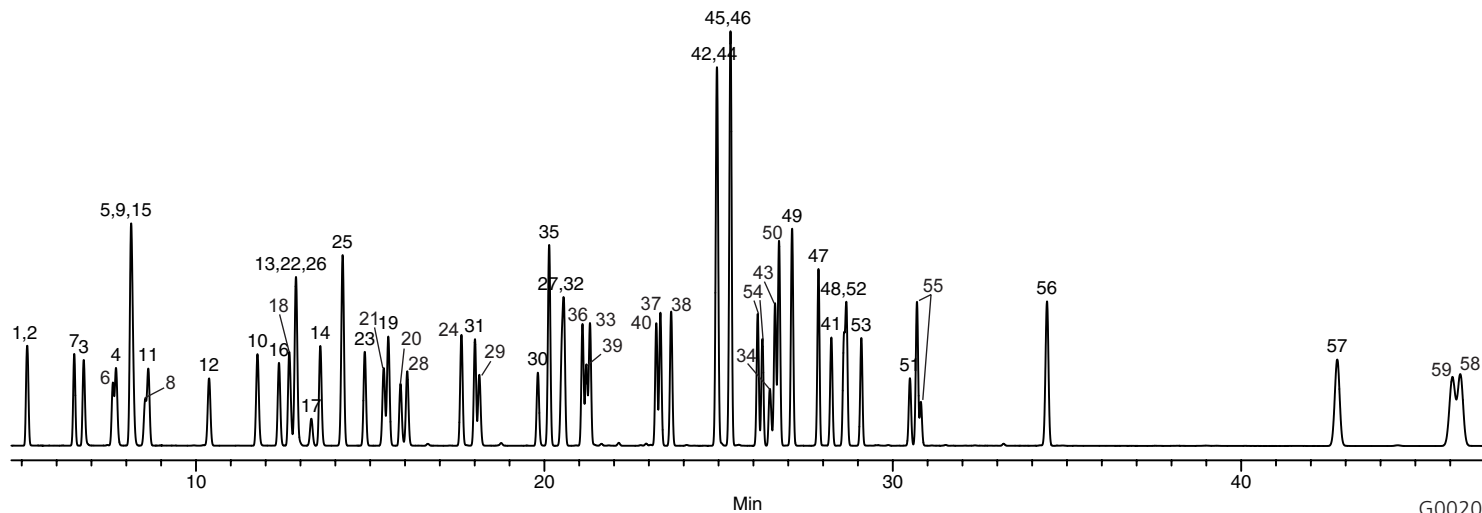
Key Words

solvents, Equity, 28199-U, intermediate polarity

Author: K. Stenerson

Raw Data File Name:
GS100APP\FROT0516.D

Acquisition System: GC 9499



G002047

Conditions

Column: Equity-1701, 30m x 0.32mm ID, 1.0µm
Cat. No.: 28199-U
Oven: 35°C (8 min) to 130°C @ 4°C/min (2 min)
Inj.: 250°C
Det.: FID, 250°C
Flow: Helium, 25cm/sec constant @ 35°C
Injection: 0.5µL, split 200:1
Liner: Split cup design
Sample: 0.5µL of a 59 component neat solvent mixture

Peak IDs

- | | |
|----------------------------------|----------------------------------|
| 1. Methanol | 31. n-Propyl acetate |
| 2. Methyl formate | 32. 4-Methyl-2-pentanone |
| 3. Ethanol | 33. Isoamyl alcohol |
| 4. Acetone | 34. Dimethylformamide |
| 5. 2-Propanol | 35. Toluene |
| 6. Ethyl formate | 36. Isobutyl acetate |
| 7. 1,1-Dichloroethylene | 37. 2-Hexanone |
| 8. Methylene chloride | 38. Mesityl oxide |
| 9. Methyl acetate | 39. Tetrachloroethene |
| 10. 1-Propanol | 40. n-Butyl acetate |
| 11. trans-1,2-Dichloroethylene | 41. Diacetone alcohol |
| 12. 1,1-Dichloroethane | 42. Chlorobenzene |
| 13. 2-Butanone | 43. 5-Methyl-2-hexanone |
| 14. sec-Butanol | 44. Ethyl benzene |
| 15. Hexane | 45. m-Xylene |
| 16. Ethyl acetate | 46. p-Xylene |
| 17. Chloroform | 47. Isoamyl acetate |
| 18. Tetrahydrofuran | 48. Cyclohexanol |
| 19. Isobutanol | 49. Styrene |
| 20. 2-Methoxyethanol | 50. o-Xylene |
| 21. 1,2-Dichloroethane | 51. 1,1,2,2-Tetrachloroethane |
| 22. 1,1,1-Trichloroethane | 52. 2-Ethoxyethyl acetate |
| 23. Isopropyl acetate | 53. Butyl cellosolve |
| 24. n-Butanol | 54. n-Amyl acetate isomers |
| 25. Benzene | 55. 2-Methylcyclohexanol isomers |
| 26. Carbon tetrachloride | 56. 1,2-Dichlorobenzene |
| 27. 2-Nitropropane | 57. 2-Methylphenol |
| 28. Trichloroethylene | 58. 3-Methylphenol |
| 29. 1,4-Dioxane | 59. 4-Methylphenol |
| 30. 2-Ethoxyethanol (cellosolve) | |